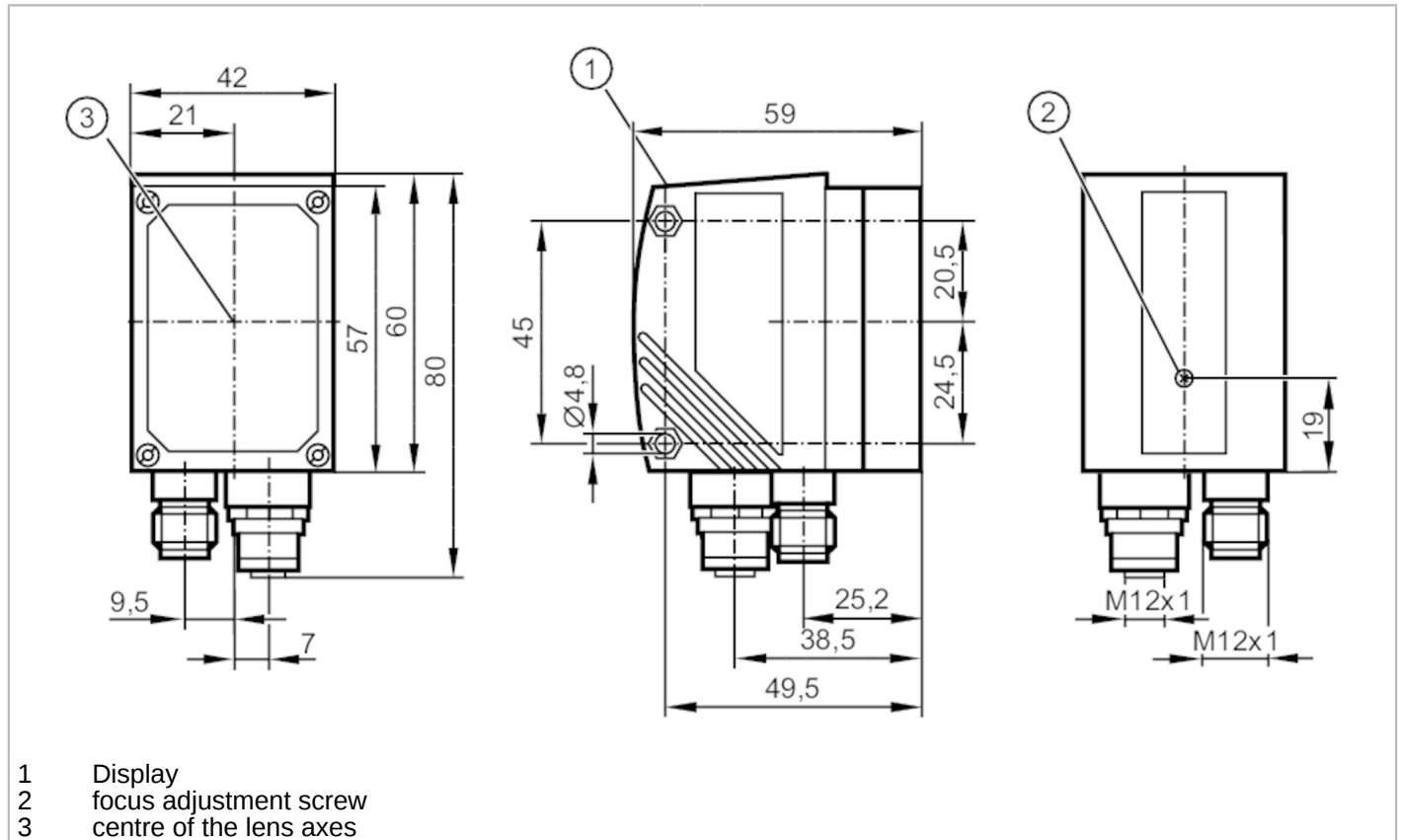


O2D224



Object recognition sensor

O2DIRPKG/K



Product characteristics	
Type of light	infrared light
Image resolution [px]	640 x 480
Max. reading rate [Hz]	20
Dimensions [mm]	60 x 42 x 59
Electrical data	
Operating voltage tolerance [%]	10
Operating voltage [V]	24 DC
Current consumption [mA]	300
Protection class	III
Reverse polarity protection	yes
Type of light	infrared light
Wave length [nm]	850
Image sensor	CMOS image sensor black/white
Inputs / outputs	
Number of inputs and outputs	Number of digital inputs: 2; Number of digital outputs: 5
Inputs	
Number of digital inputs	2
Trigger	24 V PNP (IEC 61131-2 Typ 1); internal
Input circuit of digital inputs	24 V PNP; (configurable; IEC 61131-2 Typ 1)



Object recognition sensor

O2DIRPKG/K

Outputs	
Total number of outputs	5
Number of digital outputs	5; (configurable)
Output function	24 V PNP
Max. voltage drop switching output DC [V]	2
Max. current load per output [mA]	100
Short-circuit protection	yes
Overload protection	yes

Detection zone					
Field of view size	[mm]	Operating distance	field of view	Smallest detectable object	Resolution
		75	15 x 11	0,08	0,02
		100	20 x 15	0,12	0,03
		200	40 x 30	0,25	0,063
		400	80 x 60	0,52	0,13
		1000	200 x 150	1,25	0,313
		2000	400 x 300	2,53	0,633
		Image resolution [px]	640 x 480		
Max. reading rate [Hz]	20				

Software / programming	
Parameter setting options	via two pushbuttons and 10-segment display or via PC / notebook with operating software

Interfaces	
Communication interface	Ethernet
Ethernet	
Number of Ethernet interfaces	1
Transmission standard	10Base-T; 100Base-TX
Transmission rate	10; 100
Protocol	TCP/IP; EtherNet/IP
Factory settings	IP address: 192.168.0.49
	subnet mask: 255.255.255.0
	gateway IP address: 192.168.0.201
	MAC address: see type label

Operating conditions	
Ambient temperature [°C]	-10...60
Storage temperature [°C]	-40...85
Protection	IP 67


Tests / approvals		
EMC	radiation of interference	EN 61326
	noise immunity	EN 61326
Shock resistance	IEC 60028-2-27	
Vibration resistance	IEC 60028-2-6	
MTTF [years]	90	

O2D224



Object recognition sensor

O2DIRPKG/K

Mechanical data		
Weight [g]	473	
Dimensions [mm]	60 x 42 x 59	
Materials	housing: diecast zinc powder-coated; front lens: glass; LED window: PC	
Displays / operating elements		
Display	function	3 x LED, green
	switching status	4 LED, yellow
		10-segment display, 4-digit
Accessories		
Accessories (optional)	Operating software	
	Mounting accessories	
Remarks		
Remarks	operating voltage "supply class 2" according to cULus	
Notes	For 8-pole sockets the core colours are not standardised.; Please note the wiring of the sensor and the sockets (see data sheet).	
Pack quantity	1 pcs.	
Electrical connection - Ethernet		
1	TD+	
2	RD+	
3	TD-	
4	RD-	
Connector: 1 x M12		
		
Electrical connection - Process connection		
1	U+	
2	trigger input	
3	0 V	
4	switching output 5 / trigger output	
5	switching output 3 / Ready	
6	switching output 4 / OUT	
7	switching output 1 / input 1	
8	switching output 2 / input 2	
Connector: 1 x M12		

O2D224

Object recognition sensor

O2DIRPKG/K

