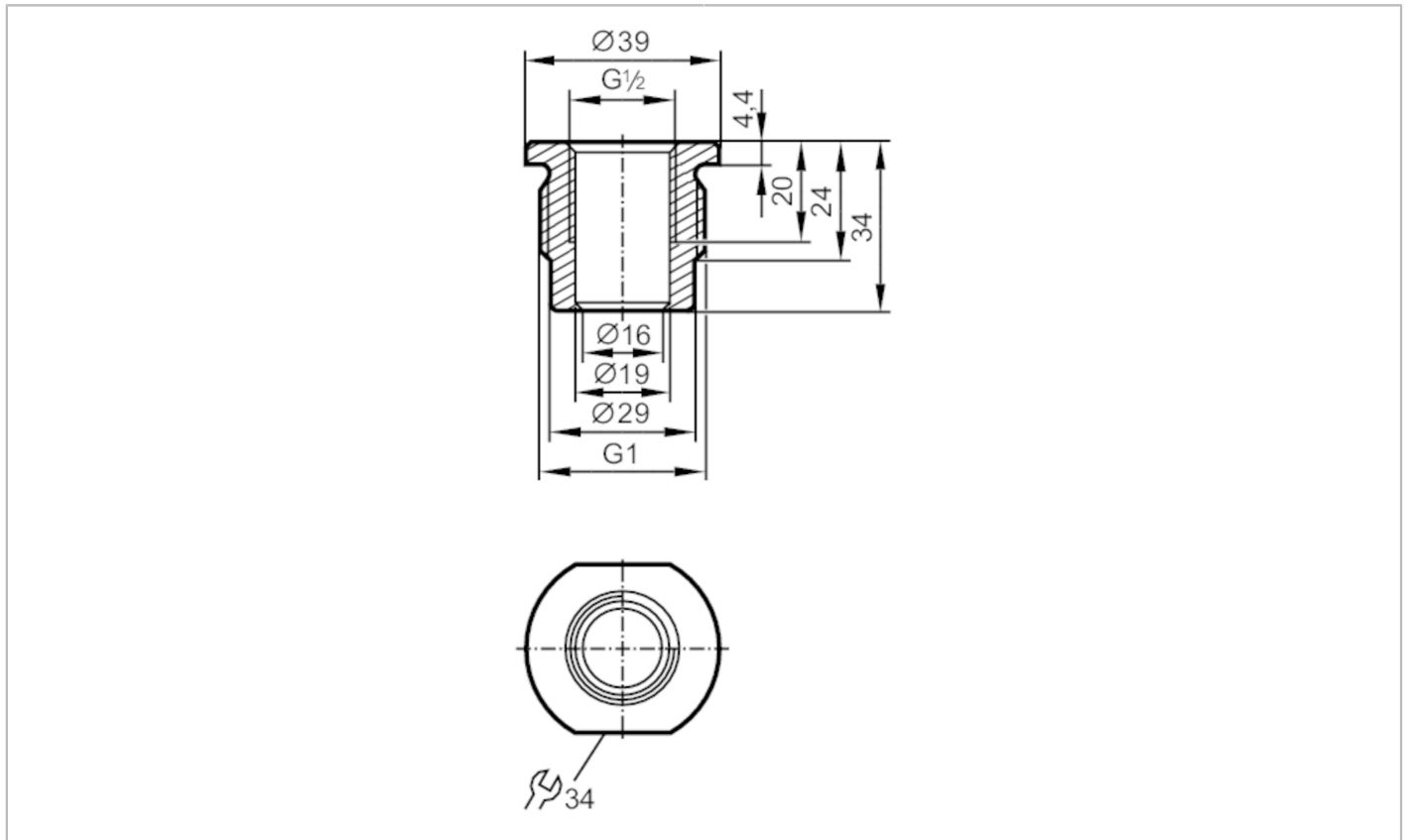


# E43303



## Screw-in adapter for process sensors

ADAPT G1/2-G1



CRN EC 1935/2004 FCM FDA

### Mechanical data

Weight	[g]	189
Materials		stainless steel (1.4435 / 316L)
Sensor connection		G 1/2 sealing cone
Process connection		threaded connection G 1
Surface characteristics Ra/Rz of the wetted parts		0.4 / 4

### Remarks

Pack quantity		1 pcs.
---------------	--	--------