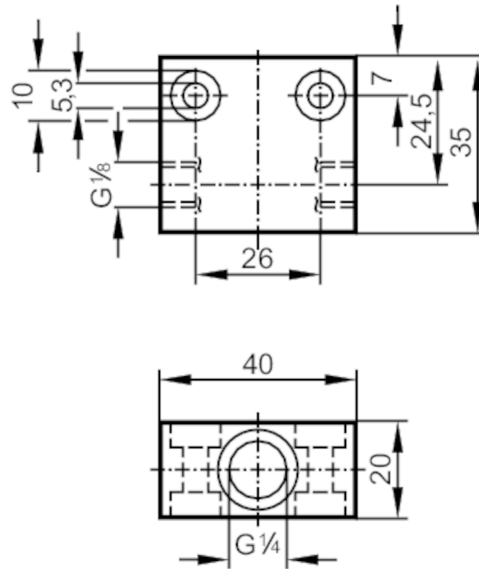


Process adapter for small volumetric flow quantities

FLOW ADAPT SF PTFE


Application

Design	for flow sensors with ceramic probe G 1/4	
Installation	via internal G1/8A male thread, any mounting position	
Medium temperature	[°C]	0...80
Pressure rating	[bar]	30

Measuring/setting range

Flow range	[ml/min]	2...50
------------	----------	--------

Tests / approvals

Pressure Equipment Directive	A possible classification to PED depends on the application and has to be carried out by the user / operator.	
Safety instructions	The compatibility between medium and product material has to be checked in all applications.	

Mechanical data

Weight	[g]	48
Materials	PTFE	
Sensor connection	G 1/4	
Process connection	G 1/8	

Remarks

Remarks	Can only be used in combination with the flow sensor's relative operating mode.	
Pack quantity	1 pcs.	