

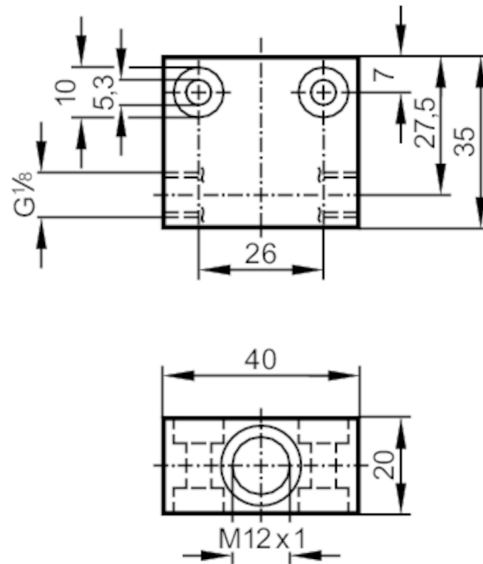
E40031



Process adapter for small volumetric flow quantities

FLOW ADAPT M12X1 PTFE

Article no longer available - archive entry



Application

Design for flow sensors and flow monitors M12 x 1

Medium temperature [°C] 0...80

Measuring/setting range

Flow range [ml/min] 2...50

Mechanical data

Type of mounting cable gland; (G 1/8 A Mounting orientation beliebig)

Dimensions [mm] M12 x 1

Thread designation M12 x 1

Materials PTFE

Remarks

Pack quantity 1 pcs.