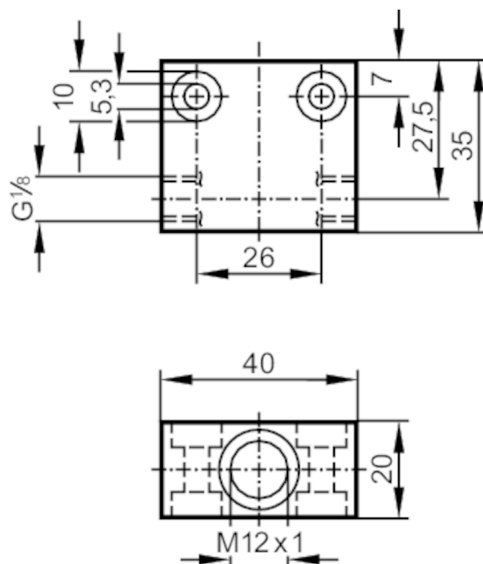


Process adapter for small volumetric flow quantities

FLOW ADAPT M12X1 AL

Article no longer available - archive entry



Application

Design	for flow sensors and flow monitors M12 x 1
Medium temperature [°C]	0...80

Measuring/setting range

Flow range [ml/min]	2...50
---------------------	--------

Tests / approvals

Pressure Equipment Directive	A possible classification to PED depends on the application and has to be carried out by the user / operator.
Safety instructions	The compatibility between medium and product material has to be checked in all applications.

Mechanical data

Type of mounting	cable gland; (G 1/8 A installation position as required)
Dimensions [mm]	M12 x 1
Thread designation	M12 x 1
Materials	AlZnMgCu (3.4335) black anodised

Remarks

Pack quantity	1 pcs.
---------------	--------