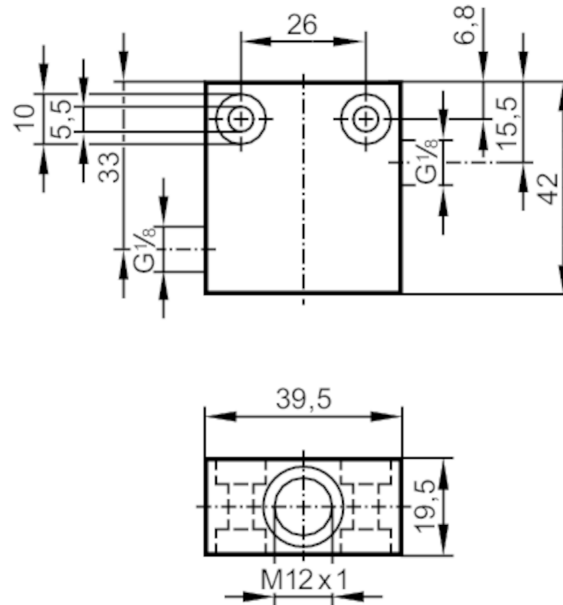


E40434



Process adapter for small volumetric flow quantities

FLOW ADAPT



Application	
Application	for industrial applications
Installation	via internal G1/8A male thread, any mounting position; (SA5)
Medium temperature	[°C] 0...80
Pressure rating	[bar] 100
Measuring/setting range	
Flow range	[ml/min] 2...150
Mechanical data	
Weight	[g] 212.7
Materials	stainless steel (316L/1.4404)
Sensor connection	M12 x 1
Process connection	G 1/8
Accessories	
Items supplied	sealings: 1, U-seal
Accessories (optional)	Adapter: ≤ 30 bar, E40101 Adapter: ≤ 300 bar, E40236
Remarks	
Remarks	Can only be used in combination with the flow sensor's relative operating mode.
Pack quantity	1 pcs.