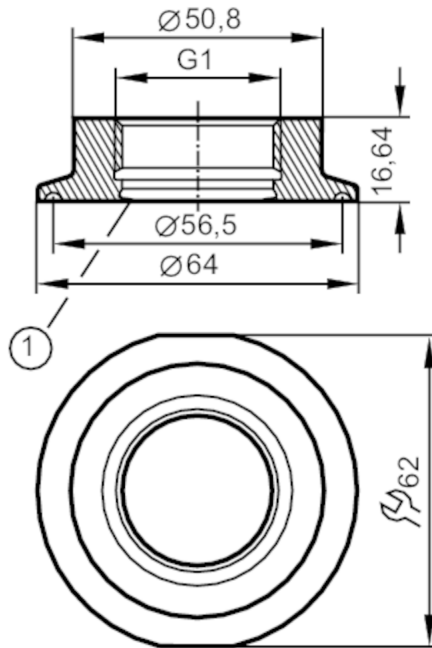




Process adapter Tri-Clamp

ADAPT IFM-CLAMP ISO2852 2"



1 sealing edge

CRN EC 1935/2004 FCM FDA

Application

Pressure rating	[bar]	16
MAWP (for applications according to CRN)	[bar]	16

Tests / approvals

Pressure Equipment Directive	A possible classification to PED depends on the application and has to be carried out by the user / operator.
Safety instructions	The compatibility between medium and product material has to be checked in all applications.

Mechanical data

Weight	[g]	231
Materials (wetted parts)	stainless steel (316L/1.4435) ; surface characteristics : Ra<0,4 / Rz 4	
Sensor connection	G 1 internal thread Aseptoflex Vario	
Process connection	Clamp DN50 (2") DIN 32676 (ISO 2852)	
Sealing	metal to metal	
Hygienic equipment class to DIN 11866	H4	

Remarks

Pack quantity	1 pcs.
---------------	--------