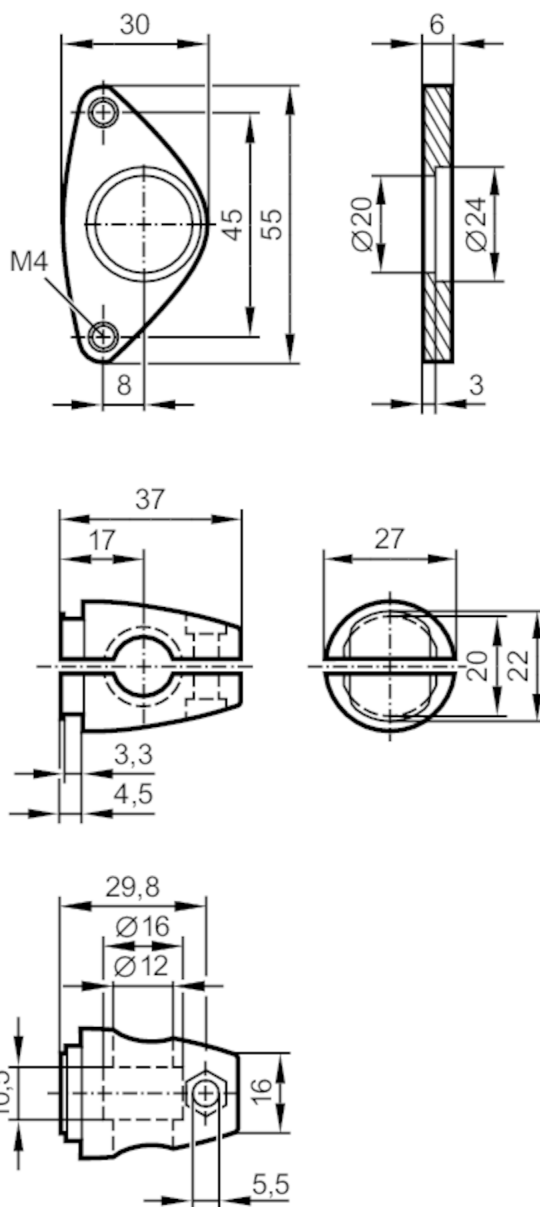


E2D110



Mounting set for vision sensors

MOUNTING SET VISION SENSOR



Application

Design	clamp mounting
--------	----------------

Mechanical data

Weight	[g]	130
Type of mounting		Mounting rod; (Ø 12 mm)
Materials		fixture: stainless steel (304/1.4301); Clamp: stainless steel (1.4408)

Remarks

Pack quantity	1 pcs.
---------------	--------