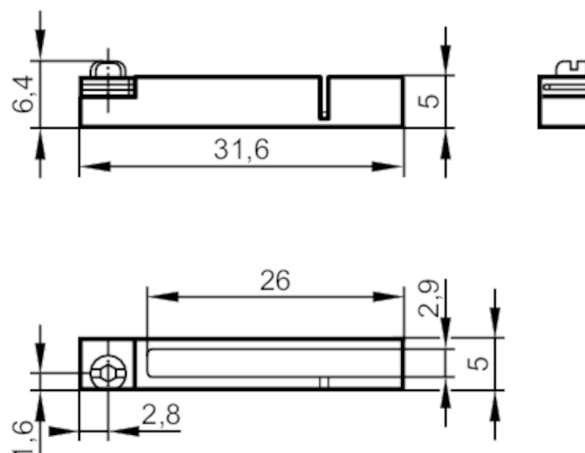




## T-slot adapter for C-slot cylinder sensor

ADAPT C-SLOT IN T-SLOT FLUSH



Application	
Design	for types, for types MKC (C-slot cylinder sensor) for installation in T-slot cylinders, MKC
Mechanical data	
Weight [g]	7.3
Type of mounting	fixing: Screw with combined slot / hexagon socket head 2.5
Dimensions [mm]	6.4 x 31.6 x 5
Materials	Adapter: diecast zinc; Fixing element: stainless steel
Remarks	
Pack quantity	1 pcs.