

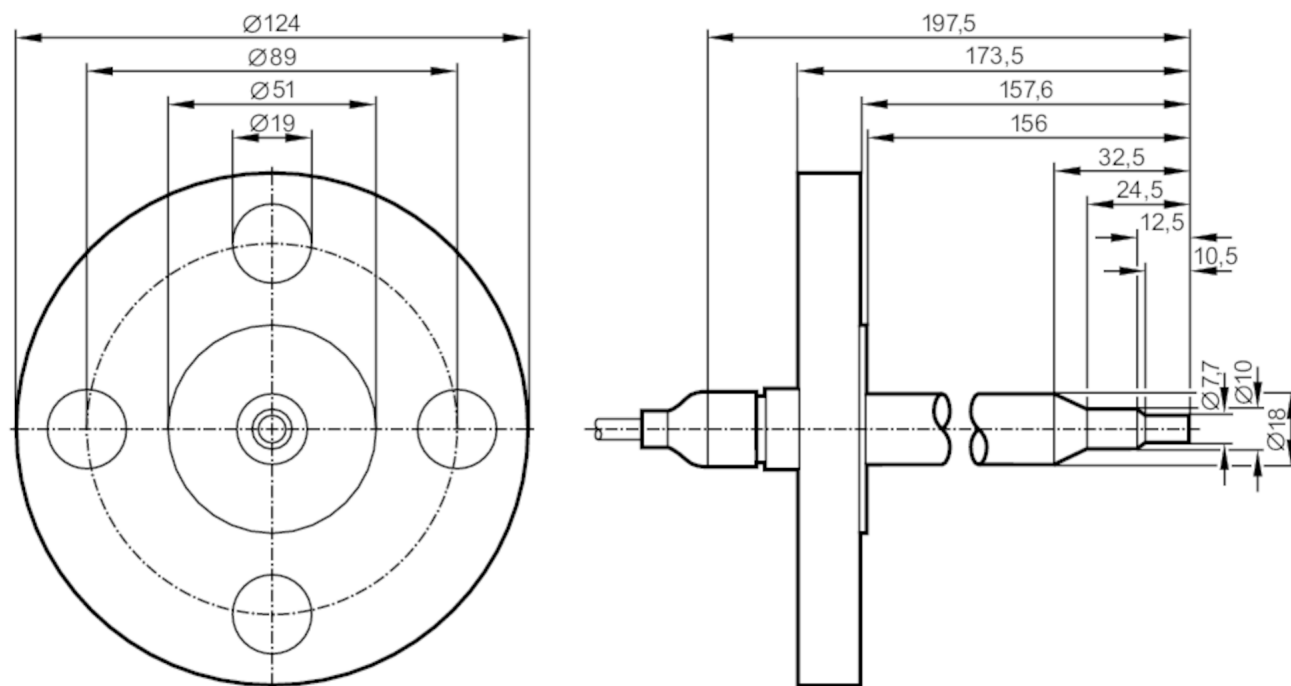
SF521A



Flow sensor for connection to an evaluation unit

SFG18ABB/2G /6M

Article no longer available - archive entry



Product characteristics

Probe length L	[mm]	156
Process connection		ANSIB 16.5 (1 in; 300 lb/sq.in)

Application

Application		high-temperature range
Media		Liquids; Gases
Medium temperature	[°C]	-20...70
Pressure rating	[bar]	30

Electrical data

Connection to control monitor		VS2000 Exi (PTB 01 ATEX 2075)
-------------------------------	--	-------------------------------

Measuring/setting range

Probe length L	[mm]	156
Liquids		
Setting range	[cm/s]	3...300
Greatest sensitivity	[cm/s]	3...60
Gases		
Setting range	[cm/s]	200...2000
Greatest sensitivity	[cm/s]	200...800

Accuracy / deviations

Temperature gradient	[K/min]	15
----------------------	---------	----

SF521A



Flow sensor for connection to an evaluation unit

SFG18ABB/2G /6M

Response times

Response time	[s]	1...10
---------------	-----	--------

Operating conditions

Ambient temperature	[°C]	-20...70
Protection		IP 67

Tests / approvals

ATEX marking	Ⓔ II 2G Ex ia IIC T4 Gb	
Shock resistance	DIN IEC 68-2-27	40 g (11 ms)
Vibration resistance	DIN IEC 68-2-6	10 g (55...2000 Hz)

Mechanical data

Weight	[g]	2.665
Housing		cylindrical
Dimensions	[mm]	Ø 18
Materials		stainless steel (316L/1.4404)
Materials (wetted parts)		stainless steel (316L/1.4404)
Process connection		ANSIB 16.5 (1 in; 300 lb/sq.in)

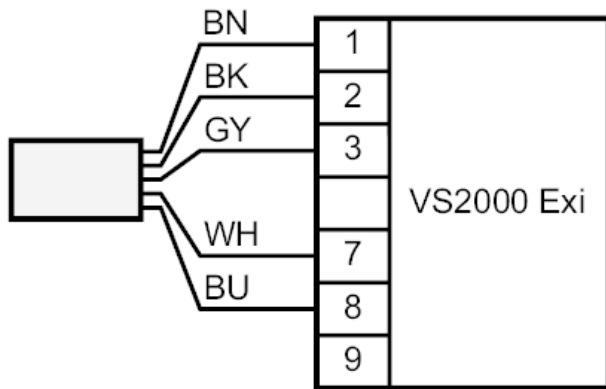
Remarks

Remarks	In principle, the type test according to 94/9/EC (ATEX) only takes atmospheric conditions into account (0.8...1.1 bar). For pressures outside this range use must be assessed and approved by the user. Adhere to the operating instructions and the type test certificate.
Pack quantity	1 pcs.

Electrical connection

Cable: 6 m, TPE-S; Maximum cable length: 100 m; 5 x 0.34 mm²

Connection



Core colours :	
BN =	brown
BU =	blue
BK =	black
WH =	white
GY =	grey