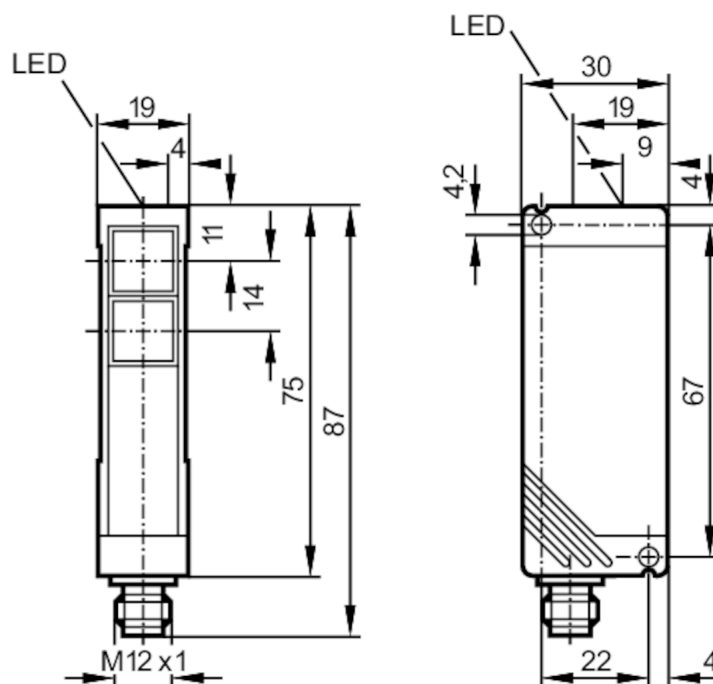


## Through-beam sensor transmitter

OTS-00KG/US-100



one transmitting diode each in upper and lower lens



## Product characteristics

Type of light	infrared light
Housing	rectangular

## Application

Function principle	Through-beam sensor
--------------------	---------------------

## Electrical data

Operating voltage	[V]	10...50 DC
Current consumption	[mA]	20; ((24 V))
Protection class		II
Reverse polarity protection		yes
Type of light		infrared light
Wave length	[nm]	880

## Detection zone

Transmitter / receiver		transmitter
Range	[m]	< 10
Range adjustable		no
Max. light spot diameter	[mm]	524
Light spot dimensions refer to		at maximum range

## Operating conditions

Ambient temperature	[°C]	-25...60
Protection		IP 65



## Through-beam sensor transmitter

OTS-00KG/US-100

Tests / approvals		
EMC	EN 60947-5-2	
	EN 55011	class B
MTTF	[years]	1862

Mechanical data		
Weight	[g]	153
Housing		rectangular
Materials		PBT
Lens material		PMMA
Lens alignment		side lens

Displays / operating elements		
Display	operation	1 x LED, green

Accessories		
Items supplied	Angle bracket: 1, E20461	
	screwdrivers	

Remarks		
Pack quantity		1 pcs.

## Electrical connection

Connector: 1 x M12; coding: A



## Connection

