

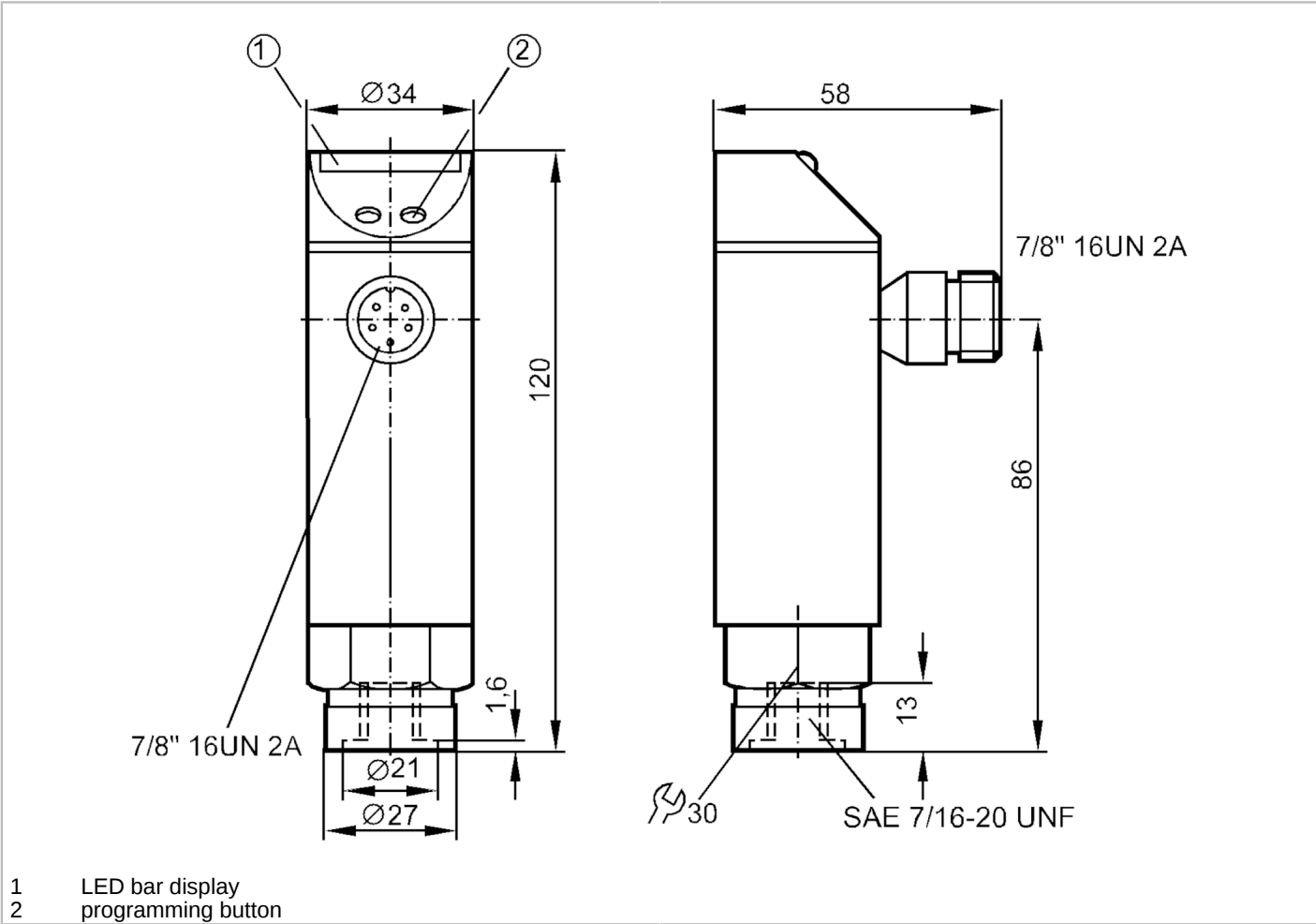


Pressure sensor with LED bar display

PZ-010PSBU76-HFBOW/LS/ IV

Article no longer available - archive entry

Alternative articles: PN4224  
When selecting an alternative article and accessories please note that technical data may differ!



- 1 LED bar display
- 2 programming button



Product characteristics	
Number of inputs and outputs	Number of digital outputs: 1
Measuring range [psi]	0...100
Process connection	threaded connection 7/16" - 20 UNF internal thread
Application	
Application	for industrial applications
Media	liquids and gases
Medium temperature [°C]	-25...70
Min. bursting pressure [psi]	2000
Pressure rating [psi]	700
Type of pressure	relative pressure
Electrical data	
Operating voltage [V]	102...132 AC



## Pressure sensor with LED bar display

PZ-010PSBU76-HFBOW/LS/ IV

Current consumption	[mA]	20
Protection class		I
Power-on delay time	[s]	0.35
Integrated watchdog		yes
<b>Inputs / outputs</b>		
Number of inputs and outputs		Number of digital outputs: 1
<b>Outputs</b>		
Total number of outputs		1
Output signal		switching signal
Number of digital outputs		1
Output function		normally open
Max. voltage drop switching output AC	[V]	2
Permanent current rating of switching output AC	[mA]	250; ((...70 °C) 1000 (...60 °C) 1500 (...45 °C) 2500 (...20 °C))
Switching frequency AC	[Hz]	10
Short-circuit protection		no
Overload protection		no
<b>Measuring/setting range</b>		
Measuring range	[psi]	0...100
Set point SP	[psi]	5...100
Reset point rP	[psi]	3...98
In steps of	[psi]	1
Note on hysteresis		adjustable
<b>Accuracy / deviations</b>		
Switch point accuracy	[% of the final value]	< ± 2,0
Repeatability	[% of the final value]	< ± 0,25; (with temperature fluctuations < 10 K)
Temperature drift per 10 K		< ± 0.5
<b>Software / programming</b>		
Adjustment of the switch point		programming button
<b>Operating conditions</b>		
Ambient temperature	[°C]	-25...70
Storage temperature	[°C]	-40...100
Protection		IP 67
<b>Tests / approvals</b>		
EMC	IEC 801/2 ESD	4 kV CD / 8 kV AD
	IEC 801/3 HF	10 V/m
	IEC 801/4 Burst	2 kV
Shock resistance	DIN IEC 68-2-27	50 g (11 ms)
Vibration resistance	DIN IEC 68-2-6	20 g (10...2000 Hz)
<b>Mechanical data</b>		
Materials		EPDM/X; FKM; NBR; PBT; PC; stainless steel (1.4301 / 304)

PZ9964



Pressure sensor with LED bar display

PZ-010PSBU76-HFBOW/LS/ IV

Materials (wetted parts)	FKM; ceramics; stainless steel (1.4305 / 303)
Min. pressure cycles	100 million
Process connection	threaded connection 7/16" - 20 UNF internal thread

Displays / operating elements

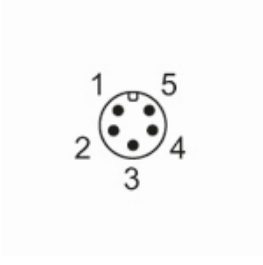
Display	switching status	LED, yellow
	measured values	10 x LED, green Resolution 10% of the final value

Remarks

Pack quantity	1 pcs.
---------------	--------

Electrical connection

Connector: 1 x 7/8"; coding: A



Connection

