



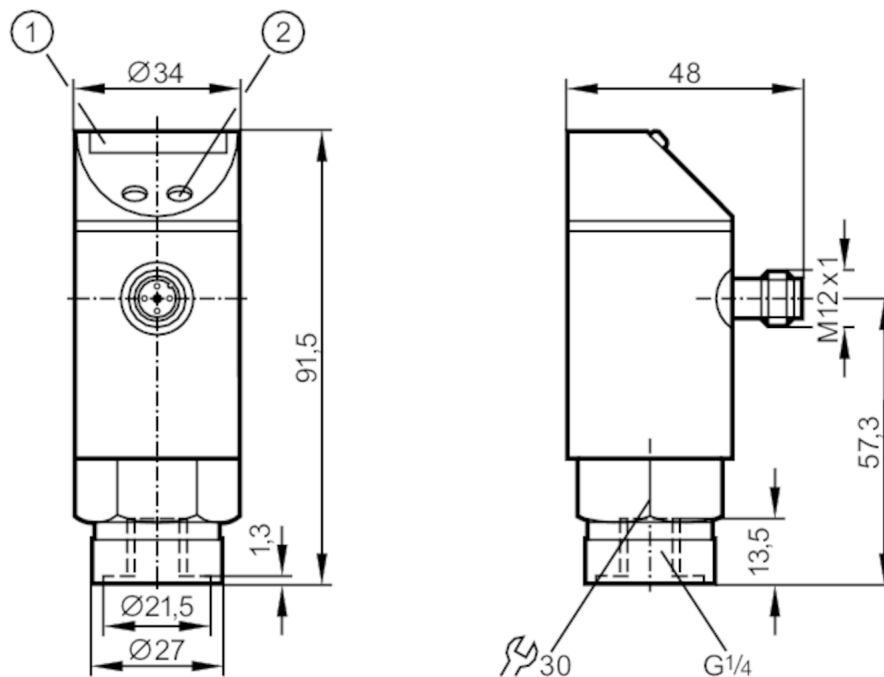
Pressure sensor with LED bar display

PB-250-SBR14-QFPG/US/ IV

Article no longer available - archive entry

Alternative articles: PN7001

When selecting an alternative article and accessories please note that technical data may differ!



- 1 LED bar display
2 programming button



Product characteristics

Number of inputs and outputs	Number of digital outputs: 2
Measuring range [bar]	0...250
Process connection	threaded connection G 1/4 internal thread

Application

Application	for industrial applications
Media	liquids and gases
Conditionally suitable for	For gaseous media the application is limited to max. 25 bar.
Medium temperature [°C]	-25...80
Min. bursting pressure [bar]	850
Pressure rating [bar]	400
Type of pressure	relative pressure

Electrical data

Operating voltage [V]	18...30 DC
Current consumption [mA]	< 50
Min. insulation resistance [MΩ]	100; (500 V DC)
Protection class	III



Pressure sensor with LED bar display

PB-250-SBR14-QFPKG/US/ IV

Reverse polarity protection		yes
Power-on delay time	[s]	0.2
Integrated watchdog		yes
Inputs / outputs		
Number of inputs and outputs		Number of digital outputs: 2
Outputs		
Total number of outputs		2
Output signal		switching signal
Electrical design		PNP
Number of digital outputs		2
Output function		normally open / normally closed; (parameterisable)
Max. voltage drop switching output DC	[V]	2
Permanent current rating of switching output DC	[mA]	250
Switching frequency DC	[Hz]	10
Short-circuit protection		yes
Type of short-circuit protection		pulsed
Overload protection		yes
Measuring/setting range		
Measuring range	[bar]	0...250
Set point SP	[bar]	12.5...250
In steps of	[bar]	2.5
Hysteresis	[bar]	5
Accuracy / deviations		
Switch point accuracy	[% of the final value]	< ± 2,0
Repeatability		
		< ± 0,25; (with temperature fluctuations < 10 K)
Temperature drift per 10 K		< ± 0.3
Software / programming		
Adjustment of the switch point		programming button
Operating conditions		
Ambient temperature	[°C]	-25...80
Storage temperature	[°C]	-40...100
Protection		IP 67
Tests / approvals		
EMC	EN 61000-4-2 ESD	4 kV CD / 8 kV AD
	EN 61000-4-3 HF radiated	10 V/m
	EN 61000-4-4 Burst	2 kV
	EN 61000-4-6 HF conducted	10 V
Shock resistance	DIN IEC 68-2-27	50 g (11 ms)
Vibration resistance	DIN IEC 68-2-6	20 g (10...2000 Hz)

PB7021



Pressure sensor with LED bar display

PB-250-SBR14-QFPKG/US/ IV

Mechanical data		
Materials	EPDM/X; FKM; NBR; PBT; PC; stainless steel (304/1.4301)	
Materials (wetted parts)	FKM; ceramics; stainless steel (303/1.4305)	
Min. pressure cycles	100 million	
Process connection	threaded connection G 1/4 internal thread	

Displays / operating elements		
Display	switching status	2 x LED, yellow
	measured values	10 x LED, green Resolution 10% of the final value

Remarks		
Pack quantity	1 pcs.	

Electrical connection

Connector: 1 x M12; coding: A

