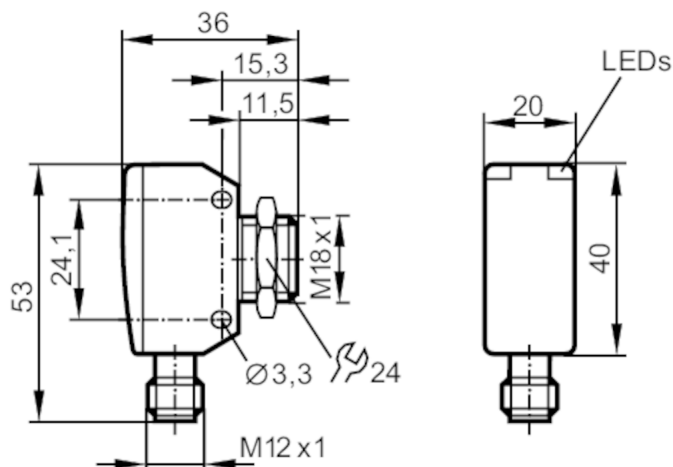


## Through-beam sensor receiver

OGE-DNKG/US/V4A/CUBE



transmitter in lower lens  
receiver in upper lens



### Product characteristics

Type of light	red light
Housing	rectangular with M18 thread

### Application

Function principle	Through-beam sensor
--------------------	---------------------

### Electrical data

Operating voltage	[V]	10...30 DC
Current consumption	[mA]	20
Protection class		III
Reverse polarity protection		yes
Type of light		red light
Wave length	[nm]	624

### Outputs

Electrical design		NPN
Output function		dark-on mode
Max. voltage drop switching output DC	[V]	2.5
Permanent current rating of switching output DC	[mA]	150; (200 (...60 °C))
Switching frequency DC	[Hz]	1000
Short-circuit protection		yes
Type of short-circuit protection		pulsed
Overload protection		yes

### Detection zone

Transmitter / receiver		receiver
Range	[m]	< 15
Range adjustable		no



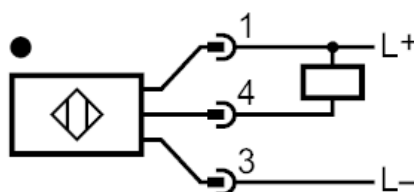
## Through-beam sensor receiver

OGE-DNKG/US/V4A/CUBE

Operating conditions		
Ambient temperature	[°C]	-25...80
Protection		IP 65; IP 67; IP 68; IP 69K
Tests / approvals		
EMC		EN 60947-5-2
MTTF	[years]	961
Mechanical data		
Weight	[g]	78.5
Housing		rectangular with M18 thread
Dimensions	[mm]	53 x 20 x 36
Thread designation		M18 x 1
Materials		stainless steel (630/1.4542/17-4 PH); PEI
Lens material		PEI
Lens alignment		side lens
Displays / operating elements		
Display	switching status	1 x LED, yellow
	operation	1 x LED, green
Accessories		
Items supplied		lock nut: 1, stainless steel
Remarks		
Remarks		operating voltage "supply class 2" according to cULus
Pack quantity		1 pcs.
Electrical connection		
Connector: 1 x M12; coding: A		



### Connection





## Through-beam sensor receiver

OGE-DNKG/US/V4A/CUBE

### Diagrams and graphs

excess gain graph

