

KG5001

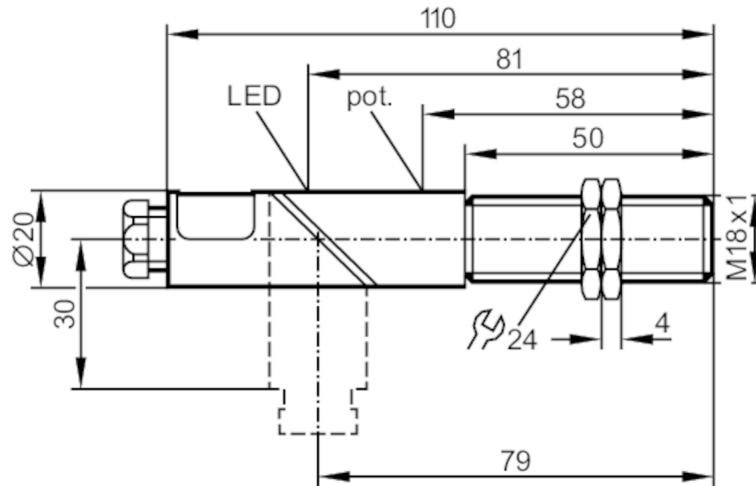
Capacitive sensor

KGE2008-FRKG



Article no longer available - archive entry

replaced by: KG5040



Product characteristics

Electrical design		PNP/NPN
Output function		normally open / normally closed; (selectable)
Sensing range	[mm]	8
Housing		threaded type
Dimensions	[mm]	M18 x 1 / L = 110

Electrical data

Operating voltage	[V]	10...55 DC
Protection class		II
Reverse polarity protection		yes

Outputs

Electrical design		PNP/NPN
Output function		normally open / normally closed; (selectable)
Max. voltage drop switching output DC	[V]	4.6
Minimum load current	[mA]	4
Max. leakage current	[mA]	0.6
Permanent current rating of switching output DC	[mA]	400
Switching frequency DC	[Hz]	50
Short-circuit protection		yes
Type of short-circuit protection		pulsed
Overload protection		yes

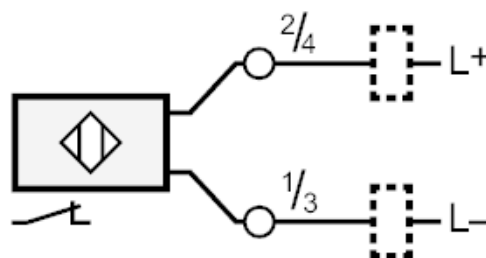
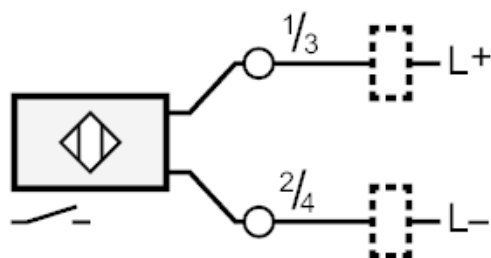
KG5001



Capacitive sensor

KGE2008-FRKG

Detection zone	
Sensing range [mm]	8
Real sensing range Sr [mm]	8 ± 10 %
Operating distance [mm]	0...6.5
Accuracy / deviations	
Correction factor	glass: 0.4 / water: 1 / ceramics: 0.2 / PVC: 0.2
Hysteresis [% of Sr]	1...15
Switch point drift [% of Sr]	-15...15
Operating conditions	
Ambient temperature [°C]	-25...80
Protection	IP 65
Tests / approvals	
EMC	EN 60947-5-2
Mechanical data	
Housing	threaded type
Mounting	non-flush mountable
Dimensions [mm]	M18 x 1 / L = 110
Thread designation	M18 x 1
Materials	PBT; end cap: PC
Displays / operating elements	
Display	switching status 1 x LED, yellow
Accessories	
Accessories (supplied)	lock nuts: 2 screwdriver: 1
Remarks	
Pack quantity	1 pcs.
Electrical connection	
terminals: ...2.5 mm ² ; Cable sheath: Ø 4.5...10 mm; Cable gland: M16 X 1.5	
Connection	



KG5001

Capacitive sensor

KGE2008-FRKG



Article no longer available - archive entry

replaced by: KG5040