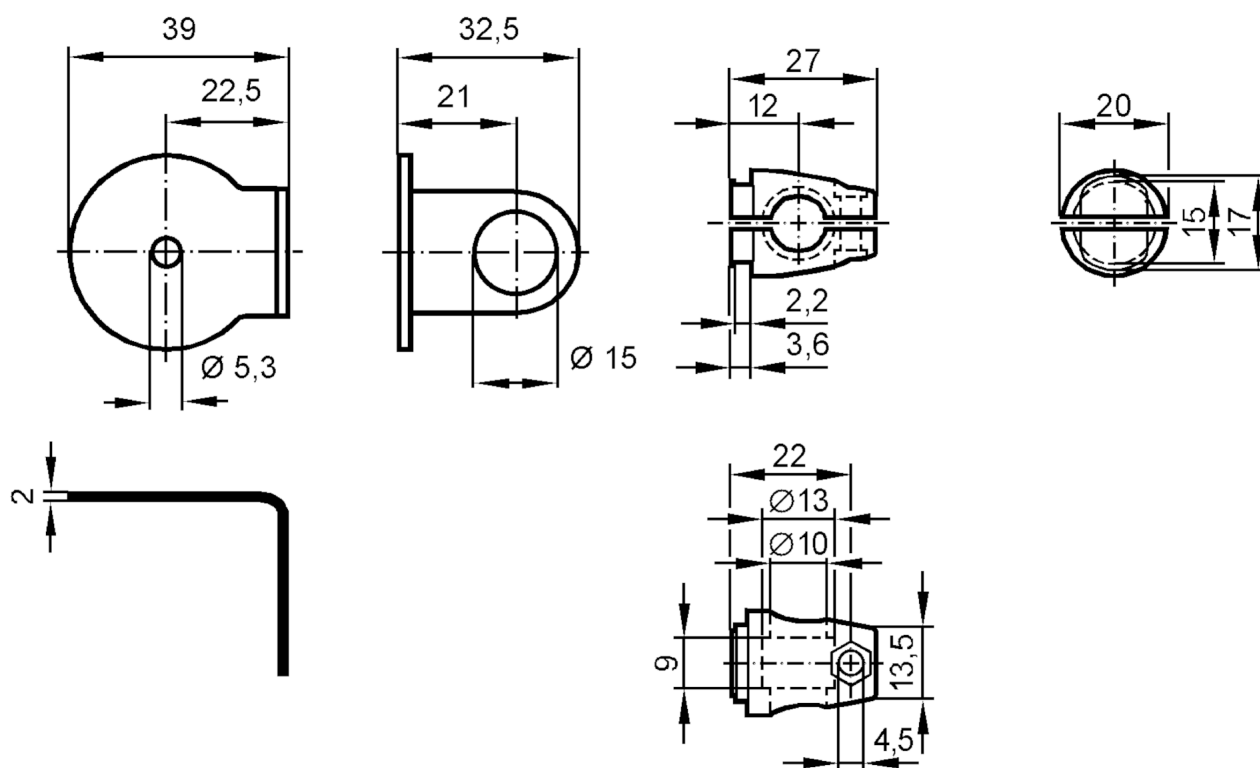


## Mounting set for reflectors

SYSTEM COMPONENT REFL BOLT



## Application

Design clamp mounting, for reflector,  $\varnothing 35$  mm

## Mechanical data

Weight	[g]	102
Type of mounting		free-standing; (M8)
Materials		fixture: stainless steel (316Ti/1.4571); Clamp: stainless steel (1.4408)

## Accessories

Items supplied screw: 1 x M8 x 40

## Remarks

Pack quantity 1 pcs.