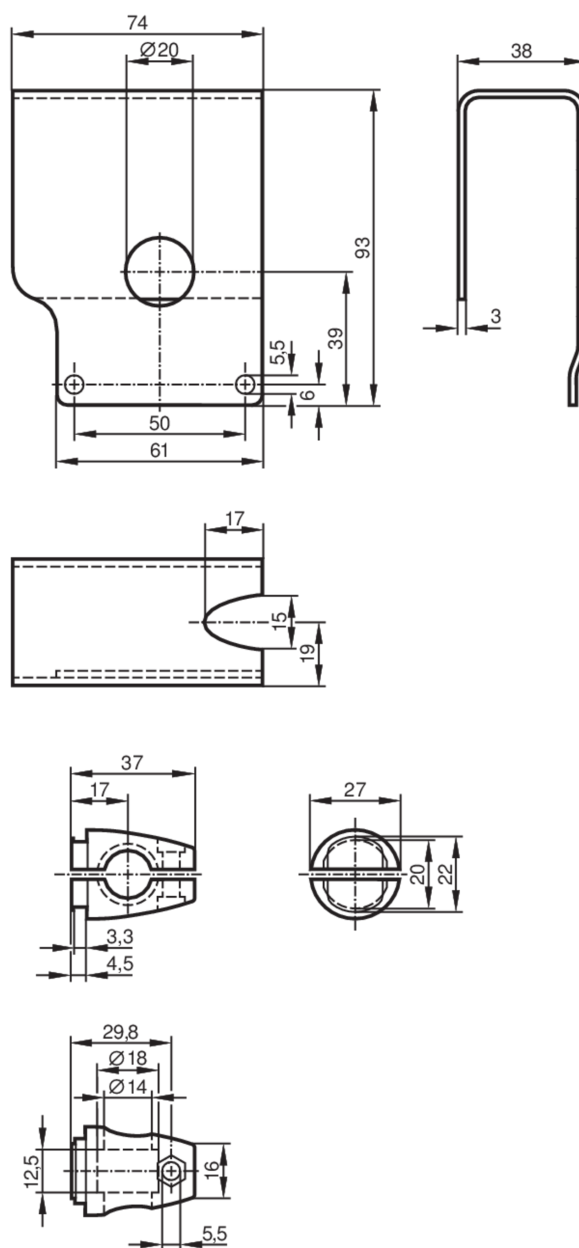


Mounting set for photoelectric sensors

SYSTEM COMPONENT OL ROD

Article no longer available - archive entry



Application

Design

clamp mounting, with protective cover

Mechanical data

Type of mounting

Mounting rod; ($\varnothing 14$ mm)

Materials

fixture: stainless steel (1.4305 / 303); Clamp: stainless steel (1.4408)

Remarks

Pack quantity

1 pcs.