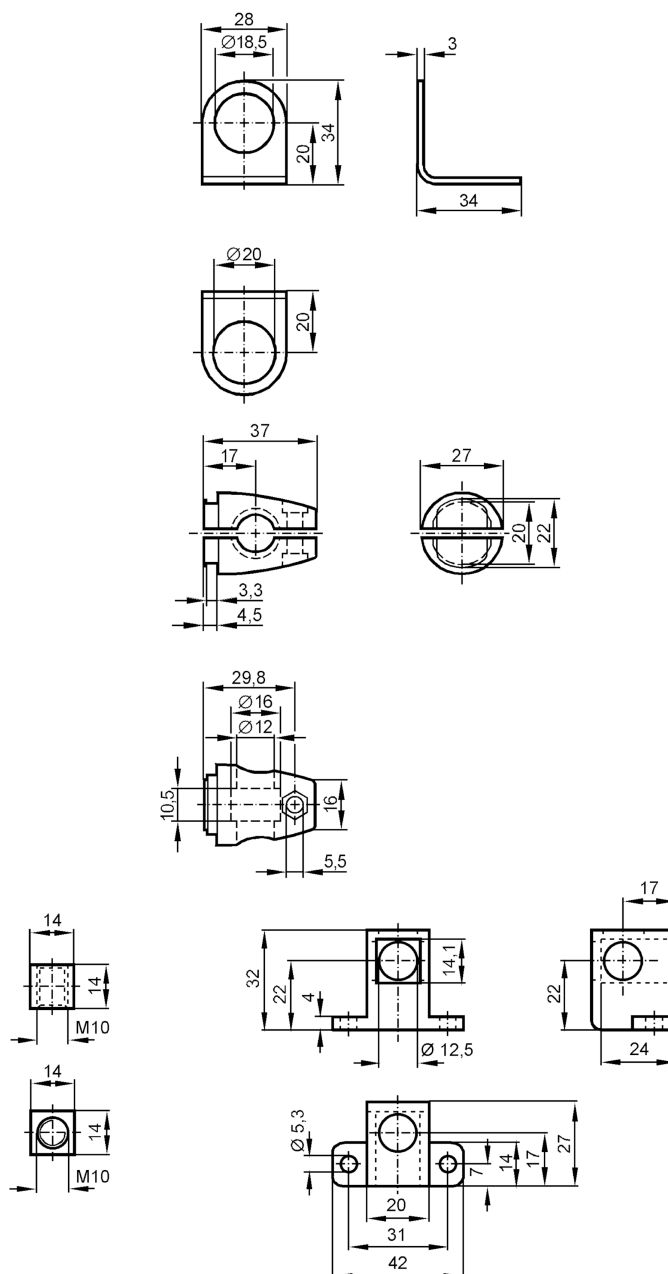


Mounting set for position sensors

SYSTEM COMPONENT M18 RAIL



Application

Design

clamp mounting

Mechanical data

Weight

[g]

264.5

Type of mounting

aluminium profile

Dimensions

[mm]

 $\varnothing 18.5$

Materials

fixture: stainless steel (316Ti/1.4571); Clamp: diecast zinc; CUBE: diecast zinc

Accessories

Items supplied

head cap screw: 1 x M10 x 55

Remarks

Pack quantity

1 pcs.