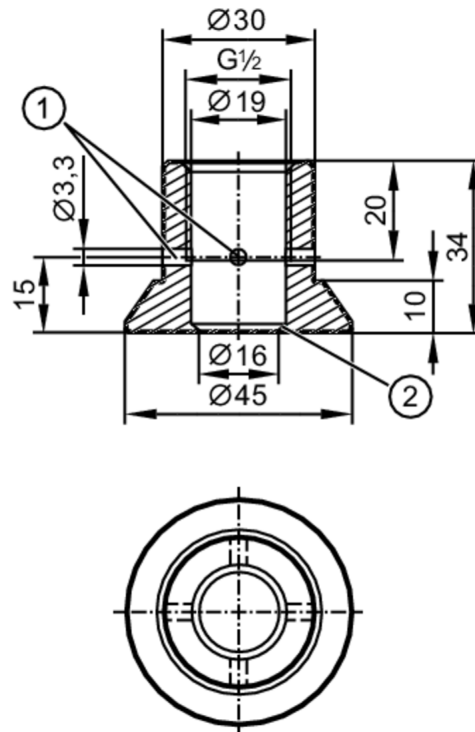




## Welding adapter for process sensors

ADAPT G1/2-WELD SHOULDER 3A



- 1 Leakage port  
2 sealing edge



CRN EC 1935/2004 EHEDG Certified FCM FDA

## Application

Design	with leakage port
Pressure rating [bar]	50
Note on pressure rating	for the connection sensor - adapter
MAWP (for applications according to CRN) [bar]	50

## Tests / approvals

Pressure Equipment Directive	A possible classification to PED depends on the application and has to be carried out by the user / operator.
Safety instructions	The compatibility between medium and product material has to be checked in all applications.

## Mechanical data

Weight [g]	215
Materials	stainless steel (316L/1.4435)
Sensor connection	G 1/2 sealing cone
Process connection	welding adapter Ø 45 mm
Surface characteristics Ra/Rz of the wetted parts	0.4 / 4

## Remarks

Pack quantity	1 pcs.
---------------	--------