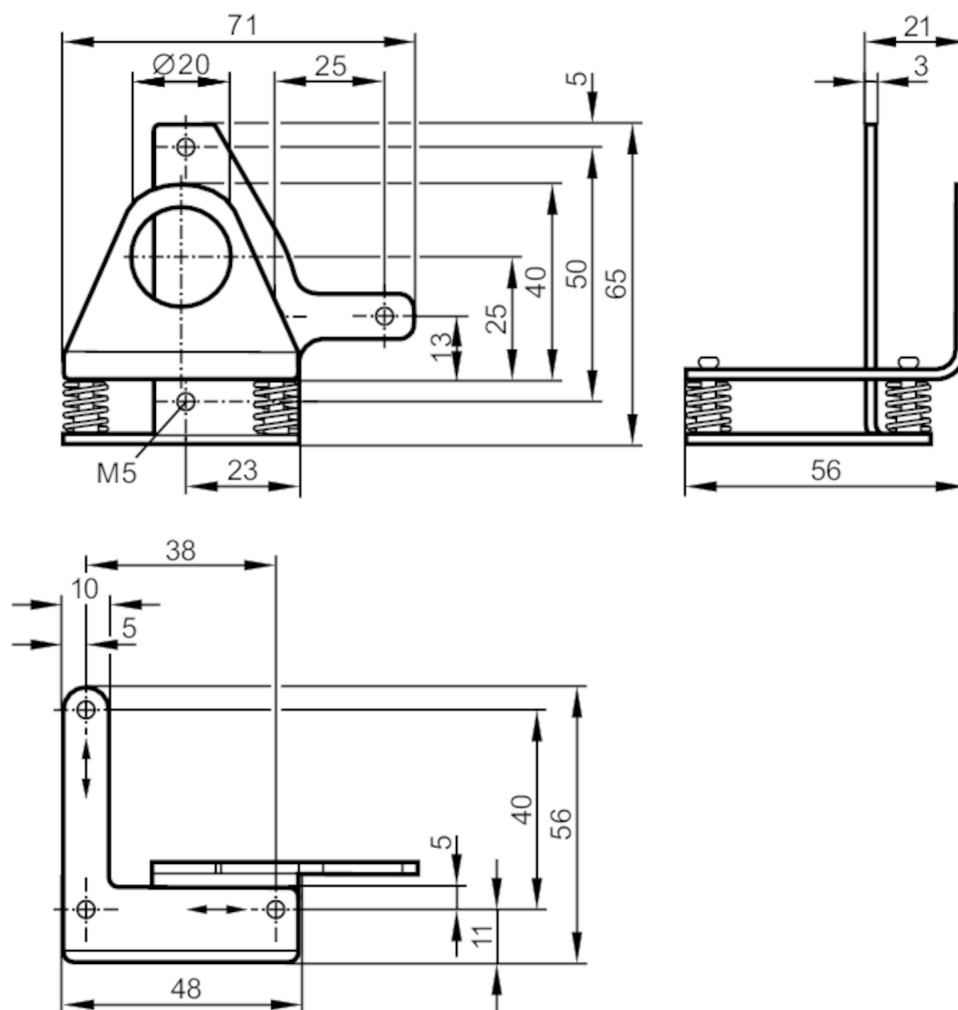


Fixture for mounting and fine adjustment of laser sensors

MOUNTING FIXTURE LASER OL



Application

Design

clamp mounting

Mechanical data

Weight

[g]

148

Type of mounting

rod or free-standing depending on the clamp

Materials

stainless steel (316Ti/1.4571)

Alignment range

fine adjustment in 2 axes $\pm 4^\circ$

Accessories

Accessories (optional)

Clamp:, for rod mounting, E20795

Clamp:, for free-standing mounting, E20796

Remarks

Remarks

To fix O5 units M5 x 25 mm cylinder head bolts are needed.

Pack quantity

1 pcs.