



One sensing range  
for all metals.  
Inductive sensors

**K plus**

Position sensors



[www.ifm.com/gb/kplus](http://www.ifm.com/gb/kplus)

**The same sensing range  
on all kinds of metals.  
For factory automation  
and welding.**

**Constant:**

Be it steel or aluminium:  
The same sensing range on all  
kinds of metals.

**Noise immune:**

Electromagnetic field immune  
sensor technology prevents  
incorrect switching.

**Space-saving:**

Compact dimensions for use in  
the smallest of spaces.

**Universal:**

Wide temperature range  
of -40...85 °C.

**Non-stick:**

Anti-spatter coating for  
welding applications.

**Fast:**

High switching frequencies for  
fast changing switching states.

**Protected:**

Ingress-resistant thanks to  
the high protecting rating from  
IP 65 to IP 69K.



**Metalworking**

*A high protection rating and a wide  
temperature range allow installation  
of the sensors in areas which are in  
constant contact with oils or coolants.*

**Kplus Universal**



**Welding robots / welding machines**

*Strong magnetic fields occur during  
welding. The new sensor technology  
reliably prevents incorrect switching.  
The sensor housing and the fixing nuts  
have a non-stick coating to prevent  
weld slag from sticking.*



**For industrial applications**



**For electro-magnetic fields**



**More than 45 years of know-how integrated into one sensor**

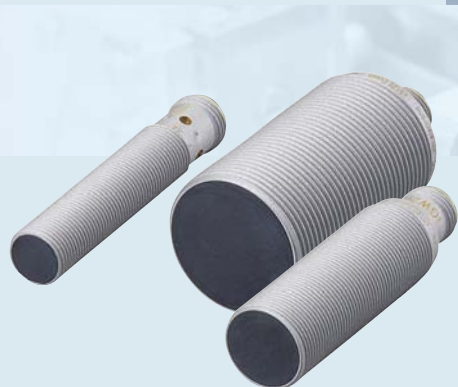
In 1969 ifm launched the first inductive sensor under the name "efector".

With a novel, patented coil structure and electronics optimised for noise immunity the new "Kplus" sensors today again set new standards for inductive sensors in factory automation and welding.



**Positioning**

Clamps hold the workpiece in place during machining. Inductive sensors monitor the position of the levers. The constant correction factor  $K=1$  ensures a consistently high sensing range on aluminium and on all other kinds of metals.



Type	Sensing range [mm]	Housing length [mm]	Order no.
<b>Stainless steel version</b>			
M12	4 f	45	IFS297
	8 nf	45	IFS298
	10 nf	45	IFS299
	4 f	60	IFS304
	8 nf	60	IFS305
	10 nf	60	IFS306
M18	8 f	45	IGS287
	12 nf	45	IGS288
	15 nf	45	IGS289
	8 f	60	IGS290
	12 nf	60	IGS291
	15 nf	60	IGS292
M30	15 f	45	IIS281
	15 f	60	IIS282
	22 nf	60	IIS283
	30 nf	60	IIS284
<b>Brass version</b>			
M12	4 f	45	IFS289
	10 nf	45	IFS290
	4 f	60	IFS285
M18	10 nf	60	IFS286
	8 f	45	IGS279
	15 nf	45	IGS280
	8 f	60	IGS277
M30	15 nf	60	IGS278
	15 f	45	IIS269
	15 f	60	IIS267
30 nf	60	IIS268	
<b>Weld-field immune version</b>			
M12	4 f	65	IFW204
M18	8 f	65	IGW202
M30	15 f	65	IIW202

**Kplus Noise immune**

For more information, such as technical data accessories, application videos or prices please go to [www.ifm.com/gb/kplus](http://www.ifm.com/gb/kplus)







Visit our website:  
[www.ifm.com](http://www.ifm.com)

**ifm – close to you!**



**Position sensors**



**Sensors for motion control**



**Industrial imaging**



**Safety technology**



**Process sensors**



**Industrial communication**



**IO-Link**



**Identification systems**



**Condition monitoring systems**



**Systems for mobile machines**



**Connection technology**



**Software**



**Power supplies**



**Accessories**



ifm electronic gmbh  
 Friedrichstraße 1  
 45128 Essen  
 Tel. +49 / 201 / 24 22-0  
 Fax +49 / 201 / 24 22-1200  
 E-mail [info@ifm.com](mailto:info@ifm.com)

