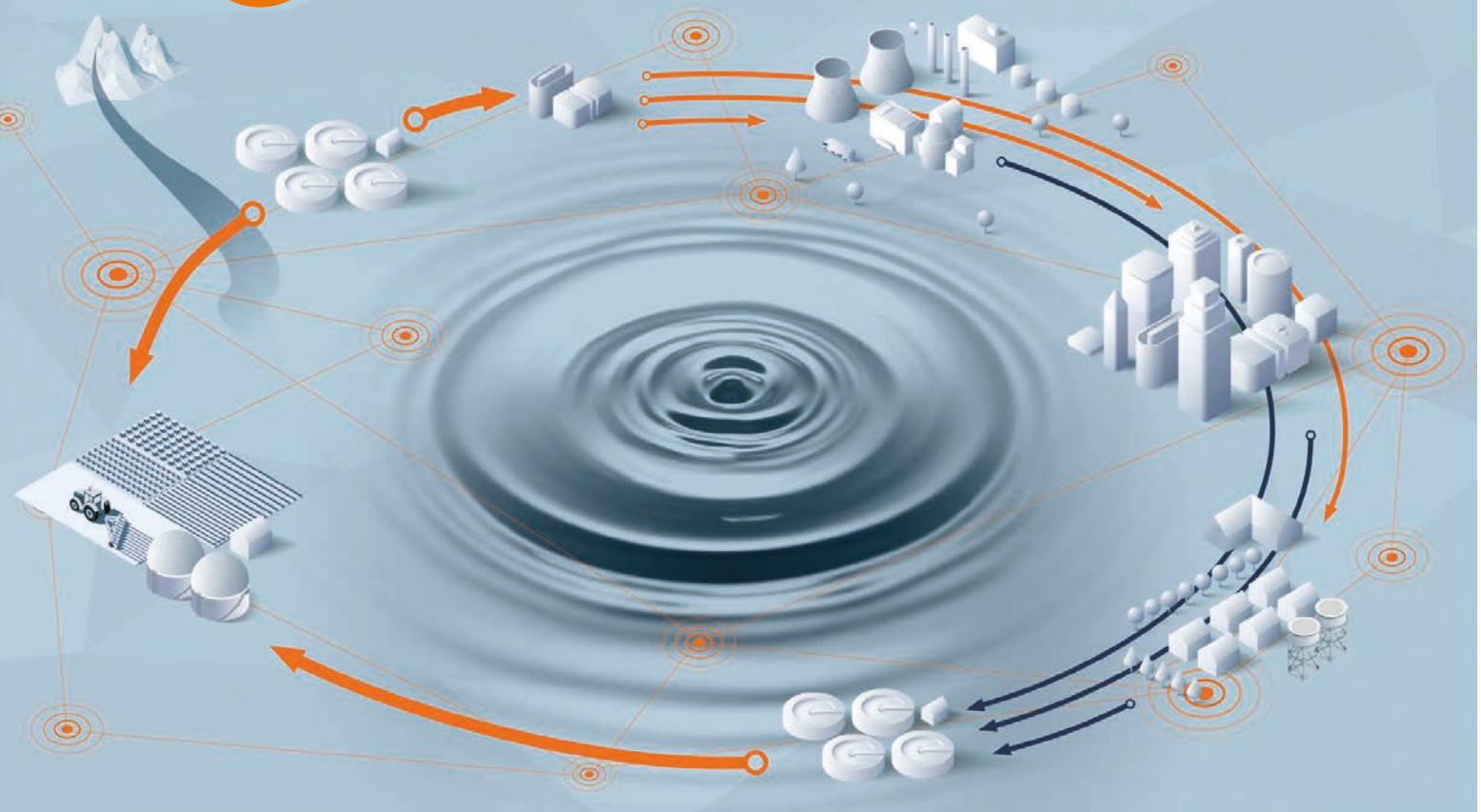




Every drop counts: smart and efficient water recovery

Automation solutions from ifm.

[water.ifm](https://www.ifm.com/water)



Water as a scarce resource: solutions for a responsible use

As the world's population continues to grow, so does the demand for and consumption of water, a vital resource. This makes it all the more important to treat water after use to a quality that makes it available for use again. This requires increasingly sophisticated, effective processes, which at the same time must be implemented and carried out as economically as possible.

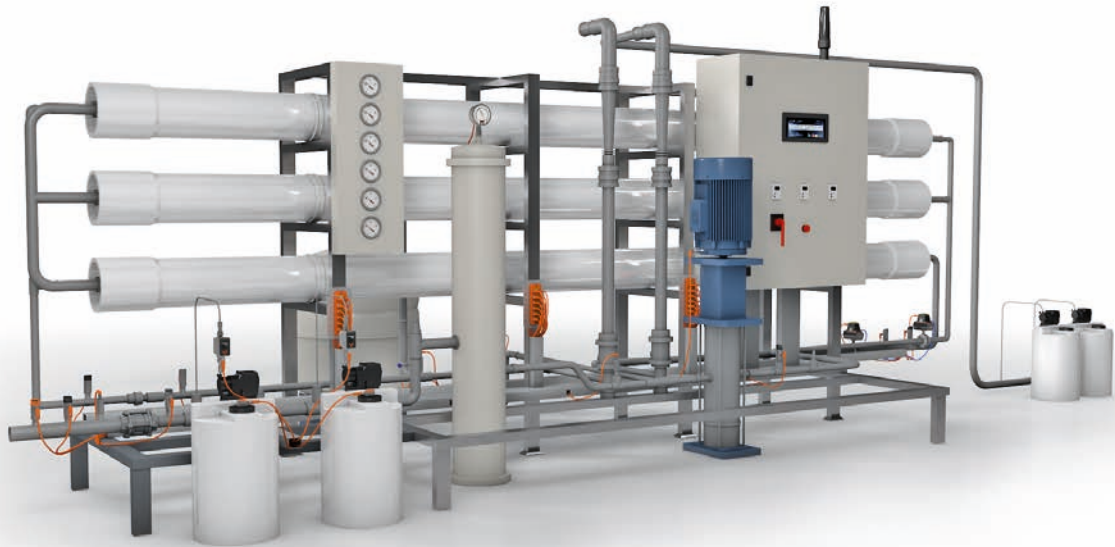
We support our customers in overcoming these challenges with automation solutions that are as reliable as they are innovative. In doing so, we always keep an eye on current requirements, but also on what will be possible tomorrow, so that security and sustainability are guaranteed in equal measure. From water procurement and wastewater treatment to consumption measurement and the reuse of industrial water – we look at the complete water cycle so that everyone will continue to have access to our planet's most valuable resource in the future.



[water.ifm](https://www.water.ifm)



Your advantage: our automation solutions



Availability. Benefit from the added value of digital data communication with IO-Link. From the sensor to the IT level, we offer you all the components you need to keep an eye on the health status and maintenance requirements of your system at all times. This helps you to keep downtime to a minimum.

Quality. Any system error during the water treatment process can result in the loss of a precious resource. With our solutions for continuous quality analysis and for a transparent overview and control of all automation components involved in the process, you can reliably safeguard your quality requirements in the long term.

Performance. The more precise the plant data you have at your disposal, the more efficiently you can treat water to the required quality. For this purpose, we provide you with precise sensor technology, the structures for loss-free digital data transmission via IO-Link and software for a simple, transparent dialogue with your plant.



Your advantages with digitised automation

- Installation time reduced by up to 60 percent.
- Configure and read sensors. On site or remotely.
- Detect maintenance requirements at an early stage thanks to continuous data evaluation.

NEREUS: efficient water recovery with smart solutions from ifm

The French company Nereus SAS develops filtration systems for water treatment. The company not only attaches importance to the highest quality in the process, but also to maximum energy efficiency. To meet both requirements, Nereus relies on sensor technology and software from ifm. Nereus integrates ifm sensors in its filtration systems in order to ensure their trouble-free operation and reliable function. Thanks to IO-Link, precise digital data is available to the company removing any conversion losses. In addition, the company saves a lot of time during plant assembly and commissioning: The cabling can be implemented more quickly and without errors, and the parameter setting of the sensors takes less time. Thanks to the seamless transfer of all files to the IT level, Nereus is able to monitor all installations remotely and react immediately if necessary. This significantly reduces the downtime of plants.



ifm article no. 78003994 · We reserve the right to make technical alterations without prior notice. · Printed in Germany on non-chlorine bleached paper. 04/21

ifm.com

