



AS-i illuminated pushbutton module with M12 connector



AS-Interface I/O modules



2 pushbuttons and 2 LED outputs

Pushbuttons with tactile pressure point as protection against accidental contact

Colour inserts changeable

Quick and easy to mount

The module is directly supplied from AS-Interface



Illuminated pushbutton module

On the basis of a new innovative housing, ifm provides two new illuminated pushbutton modules. They feature two pushbuttons and 2 types of LED output. The high protection rating means the modules can be used in the field, i.e. close to the process.

There are no long distances between sensors/actuators and the control cabinet.

Performance in the field

The M12 connection technology provides a high degree of installation reliability and flexibility. Both modules are exclusively supplied via AS-i; an additional 24 V voltage source is not required. The modules are simply mounted on a 35 mm DIN rail or using the supplied mounting adapter.



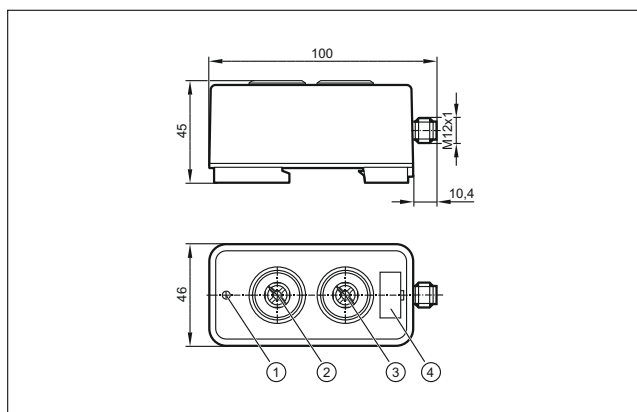
Addressing

The AS-i modules are addressed via the front M12 plug. The modules can be connected to the addressing unit using the standard connection cable.

Diagnostic LED

The FAULT LED on the module ensures easy localisation of a fault, such as a communication error.

Dimensions





- 1) LED PWR / FAULT
- 2) button 1 / LED 1
- 3) button 2 / LED 2
- 4) panel for labelling

The products

| Design | Description | Order no. |
|--------|-------------|-----------|
|--------|-------------|-----------|

AS-i illuminated pushbutton module

| | | |
|---|--|---------------|
|  | 2 buttons / 2 LEDs, colour inserts changeable, 2 white LEDs, 2 NO | AC2386 |
|---|--|---------------|


| | | |
|---|---|---------------|
|  | 2 buttons / 2 LEDs, Colour inserts red / green, red / green LED, normally closed / normally open | AC2388 |
|---|---|---------------|


Common technical data

| | | |
|-----------------------------------|--------|-------------|
| Operating voltage | [V DC] | 26.5...31.6 |
| Total current consumption | [mA] | < 55 |
| Sensor supply Inputs / outputs | [V DC] | via AS-i |
| Extended addressing mode | | • |
| AS-i specification | | 2.11 + 3.0 |
| Ambient temperature | [°C] | -25...60 |
| Protection | | IP 67 |

Accessories



| Design | Description | Order no. |
|--------|-------------|-----------|
|--------|-------------|-----------|

| | | |
|---|--|---------------|
|  | FC insulation displacement connector, round cable 0.6 m to M12 socket | E70483 |
|---|--|---------------|

| | | |
|---|--|---------------|
|  | FC insulation displacement connector, M12 | AC5005 |
|---|--|---------------|

Connection technology

| Design | Description | Order no. |
|--------|-------------|-----------|
|--------|-------------|-----------|

| | | |
|---|--|---------------|
|  | Connection cable, M12, 1 m black, PUR cable | EVC042 |
|  | Connection cable, M12, 2 m black, PUR cable | EVC043 |