



Position sensors

# Continuous level measurement and object detection to up to 8 m



Ultrasonic sensors



Width of the sound beam adjustable via IO-Link

Sensing range up to 8 m in M30 design

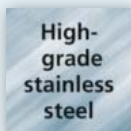
Easy setting via teach button or IO-Link

The vibrating sound transducer reduces the deposit of dirt

Robust stainless steel housing



Ultrasound



High-grade stainless steel



TEACH-IN



IO-Link



IP 67

## Long ranges

The new ifm ultrasonic sensors in M30 design are distinguished by their long range of up to 8 m. This makes them particularly suited for the detection of objects far away or for continuous level monitoring, e.g. of bulk materials or liquids. As opposed to photoelectric sensors colour, transparency or the object's or medium's surface shine do not affect sensing.

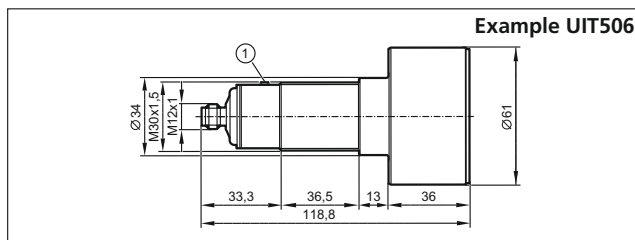
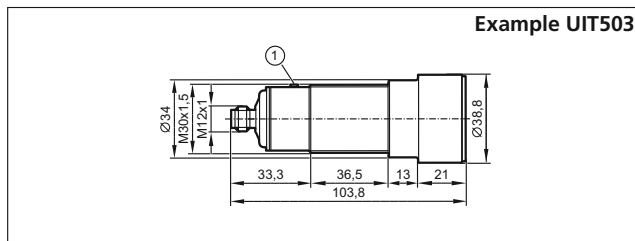
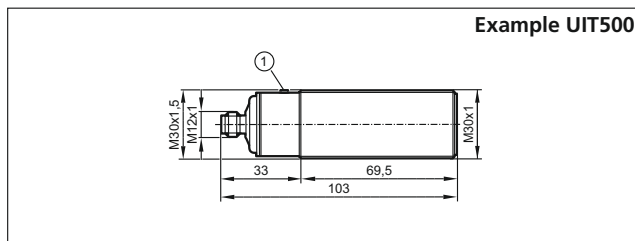
## Adjustable sound beam

Due to limited space unwanted reflections at the inside of the tank may occur in level applications. This can lead to faulty measurement results. Thanks to IO-Link, the sound beam can be set individually according to the application. With IO-Link, the user is well prepared for Industry 4.0.



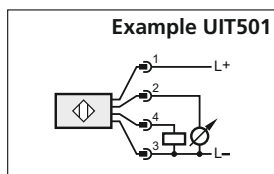
Type	Setting	Output	Operating voltage according to cULus [V DC]	Order no.	Order no.	Order no.
<b>Ultrasonic diffuse-reflection sensor · 3-wire DC, 4-pole</b>				<b>3500 mm</b>	<b>6000 mm</b>	<b>8000 mm</b>
M30 x 1.5	pushbutton, IO-Link	2 x PNP	10...30; "supply class 2"	<b>UIT500</b>	<b>UIT503</b>	<b>UIT506</b>
M30 x 1.5	pushbutton, IO-Link	PNP + 4...20 mA	10...30; "supply class 2"	<b>UIT501</b>	<b>UIT504</b>	<b>UIT507</b>
M30 x 1.5	pushbutton, IO-Link	PNP + 0...10 V	10...30; "supply class 2"	<b>UIT502</b>	<b>UIT505</b>	<b>UIT508</b>
M30 x 1.5	pushbutton	2 x NPN	10...30; "supply class 2"	<b>UIT509</b>	<b>UIT512</b>	<b>UIT515</b>
M30 x 1.5	pushbutton	NPN + 4...20 mA	10...30; "supply class 2"	<b>UIT510</b>	<b>UIT513</b>	<b>UIT516</b>
M30 x 1.5	pushbutton	NPN + 0...10 V	10...30; "supply class 2"	<b>UIT511</b>	<b>UIT514</b>	<b>UIT517</b>

## Dimensions



1) Teach button

## Wiring diagram



## Common technical data

Current rating	[mA]	100
Switching output		
Ambient temperature	[°C]	-20...70
Temperature compensation		•
Protection rating		IP 67
Connection		M12 connector
Status indications	LED	2 x yellow
Echo	LED	1 x green

## Accessories

Type	Description	Order no.
	Angle bracket for M30 design, stainless steel	<b>E10737</b>
	USB IO-Link master for parameter setting and analysis of units Supported communication protocols: IO-Link (4.8, 38.4 and 230 kBit/s)	<b>E30390</b>
	LR DEVICE (supplied on USB flash drive) Software for online and offline parameter setting of IO-Link sensors and actuators	<b>QA0011</b>

## Connection technology

Type	Description	Order no.
	Socket, M12, 4-pole 2 m, black, PUR cable	<b>EVC001</b>
	Socket, M12, 4-pole 5 m, black, PUR cable	<b>EVC002</b>
	Socket, M12, 4-pole 2 m, black, PUR cable	<b>EVC004</b>
	Socket, M12, 4-pole 5 m, black, PUR cable	<b>EVC005</b>