



Position sensors

# Very robust position sensors with 1 mm-thick metal face



Cylinder sensors



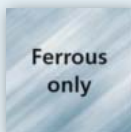
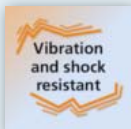
**Extremely pressure resistant with over 10 million pressure cycles**

**Best value performer**

**Complementary output provides higher operational reliability**

**Standard M12 housing with ingress-resistant cable entry**

**Short housing (40 mm) for extremely low-profile cylinders**



### Function principle

The new MFH series sensor is suited for flush mounting in various steels. With its 1.8 mm sensing range it shows reliable switching characteristics. The new operating principle of this unit is based on a magnetic-inductive technology that detects only ferromagnetic metals (e.g. steel). It is sealed by means of an O-ring and a supporting ring towards the pressure area.

### Applications

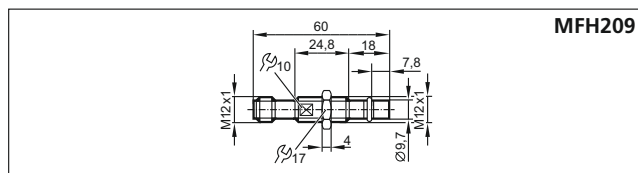
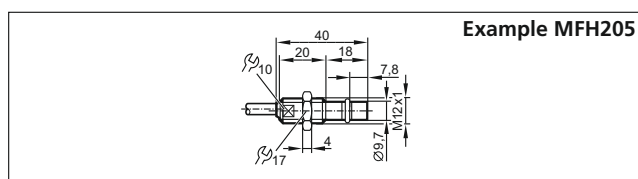
Besides use in hydraulic cylinders, the sensor is also ideal for other hydraulic components such as valves or pumps. MFH operates reliably for the lifetime of the cylinder. Furthermore, it is used in mechanical engineering processes, e.g. in plastic injection-moulding or process industry applications.

Its attractive price means the sensor can also be considered for simple components where this option used to be too expensive.

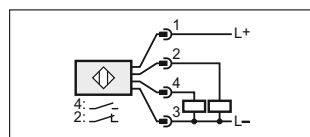
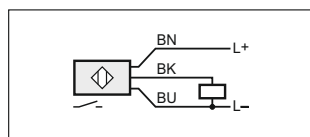


Type	Housing length [mm]	Sensing range [mm]	LED	Ambient temperature [°C]	Output	Order no.
<b>Cable connection</b>						
M12	40	1.8 f	•	-25...85	PNP, NO	<b>MFH205</b>
M12	40	1.8 f	•	-25...85	NPN NO	<b>MFH206</b>
M12	40	1.8 f	•	-25...85	PNP, NC	<b>MFH207</b>
M12	40	1.8 f	•	-25...85	PNP, NO/NC	<b>MFH208</b>
<b>M12 connector, complementary</b>						
M12	60	1.8 f	-	-25...120	PNP, NO/NC	<b>MFH209</b>

## Dimensions



## Wiring



MFH205

MFH209

## Accessories

Type	Description	Order no.
	Optical particle monitor	<b>LDP100</b>
	Seal process connection, set 5 O-rings + 5 supporting rings	<b>E12451</b>
	Switched-mode power supply 24 V DC / 5 A, metal housing	<b>DN4012</b>

## Common technical data

Operating voltage	[V]	10...36 DC
Current rating	[mA]	200
Switching frequency	[Hz]	1000
Short-circuit protection, pulsed		•
Protected against reverse polarity / overload protected		• / •
Operating pressure	[bar]	500
Pressure rating, static	[bar]	1000
Burst pressure	[bar]	2000
Protection rating, protection class		IP 65 / IP 68 / IP 69K, III
Housing material		stainless steel 1.4404

## Connection technology

Type	Description	Order no.
	M12 socket, 2 m black, PUR cable	<b>EVC001</b>
	M12 socket, 2 m black, PUR cable, LED	<b>EVC644</b>
	Y splitter, "OR" M12 connector / 2x M12 socket	<b>EBC117</b>
	Y splitter, "AND", M12 connector / 2x M12 socket	<b>EBC118</b>