



# Repeater to extend AS-i networks up to 1000 m



AS-Interface cable extensions



**Increased operating temperature range -25...70 °C**

**Reliable long term performance in tough conditions**

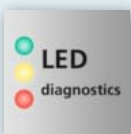
**Fast data transfer for Safety at Work**

**Clearly visible diagnostic LEDs**

**Plug-in connection terminals**



IP 20



## Operation

Repeaters are used for AS-Interface to enable the network cable run to be extended beyond 100 m. Galvanic separation of network segments and independent voltage supplies ensure stability. The 62 participants are provided with a higher total current and the voltage drop decreases.

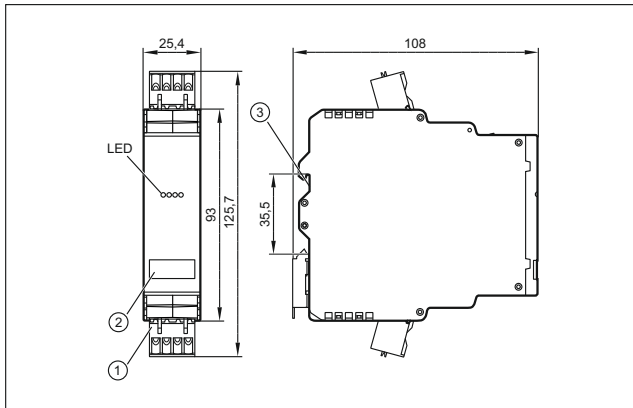
## Features of the unit

The improved performance is packed into the new SmartLine housing. While conventional repeaters usually have a temperature range from 0...55 °C, the new unit from ifm operates reliably across a broad range from -25...70 °C.

The improved operating temperature range makes the new unit from ifm a class leader. This results in a longer life time thus saving time and money.



## Dimensions



- 1) plug with cage clamp connection
- 2) panel for labelling
- 3) Din rail adapter



## Products

Description	Order no.
<b>SmartLine AS-i repeater</b>	
Protection IP 20, Combicon connectors	<b>AC3225</b>

## Technical data

SmartLine AS-i repeater AC3225		
Operating voltage	[V DC]	26.5...31.6
Total current consumption via AS-i	[mA]	2 x 60
Ambient temperature	[°C]	-25...70
Housing material		PA 6.6

## Accessories

Type	Description	Order no.
	AS-i power supply 115/230 V AC, output current (AS-i) 2.8 A	<b>AC1256</b>
	AS-i power supply 115/230 V AC, output current (AS-i) 8 A	<b>AC1258</b>