



# 4-port IO-Link master: intelligent connection of sensors



IO-Link master



**4 IO-Link ports with full V1.1 functionality, COM1, COM2, COM3 and SIO mode**

**Master and devices configurable via the LR DEVICE software**

**2 Ethernet ports 10/100 Mbits/s with switch for Profinet**

**SAP ready via LR AGENT EMBEDDED**

**Voltage supply via standard sensor cable, M12 A-coded**



## Robust field bus modules with safe connection

ifm's new IO-Link masters are the perfect choice, even for the most difficult environments: the materials and production methods are identical to the ifm jumper cables of the tried-and-tested EVC product series. The ecolink technology guarantees reliable, permanently ingress-resistant M12 connections of the connection cables.

## Energy limitation for UL class 2 units

Many sensors require an energy-limited supply with UL class 2 approval. The limitation of energy is usually achieved via a corresponding power supply. With the AL1100 IO-Link master, sensors can be supplied according to UL class 2 without using an energy-limited power supply approved according to UL class 2.



## Advantages and customer benefits

- **Configuration of sensors with LR DEVICE**

The intuitive software finds all IO-Link masters in the Ethernet network and creates an overview of the whole plant. Besides, all sensors connected are indicated with the respective parameters. This means that parameter setting of all sensors in the system is possible from one central point.

- **Easy sensor connection**

The sensors and actuators are connected via standard M12 connection cables without screening. Up to 4 IO-Link sensors can be connected and be supplied with up to 3.6 A. With the EVC693 accessories, additional auxiliary supply for the connection of IO-Link actuators can be supplied. The cable can be up to 20 m long.

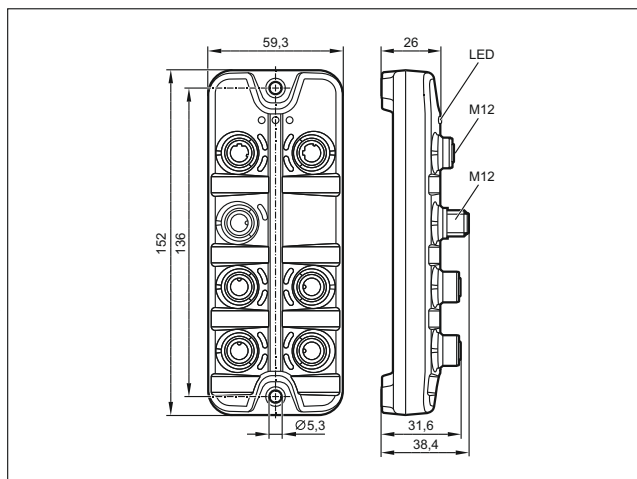
- **Reliable digital data**

The sensor data is transferred digitally. Unlike analogue signals, contact resistance and EMC interference cannot corrupt the signals.

- **Direct connection to the IT**

The integrated LR AGENT EMBEDDED is capable of transmitting the process values directly to ERP systems, without detour via the PLC. This second communication path is available in parallel to PROFINET via the bus wiring.

## Dimensions



## Products

Description	Order no.
<b>IO-Link master with PROFINET interface</b>	
Protection rating IP 65 / IP 67, I/O modules for field applications	<b>AL1100</b>

## Technical data

4-port IO-Link master AL1100		
Operating voltage	[V DC]	20...30
Total current consumption	[A]	≤ 3.9
IO-Link version		1.1
Number of IO-Link ports		4
Number of binary inputs		4 + 4 (IO-Link in SIO mode)
Number of binary inputs		4 (IO-Link in SIO mode)
Parameter memory		•
Current for all ports (device supply)	[A]	≤ 3.6
Ambient temperature	[°C]	-25...60
Housing materials		Polyamide; socket: nickel-plated brass

## Connection technology

Description	Order no.
M12 Y-splitter, 1 m black, PUR cable	<b>EVC693</b>
M12 Y-splitter, 2 m black, PUR cable	<b>EVC694</b>
M12 Y-splitter, 5 m black, PUR cable	<b>EVC695</b>
M12 Y-splitter, 10 m black, PUR cable	<b>EVC696</b>