

New AS-i repeater for extended networks



Repeater to extend AS-i networks up to 1000 m

- Increased operating temperature range -25...70 °C
- Reliable long term performance in tough conditions
- Fast data transfer for Safety at Work
- Clearly visible diagnostic LEDs
- Plug-in connection terminals



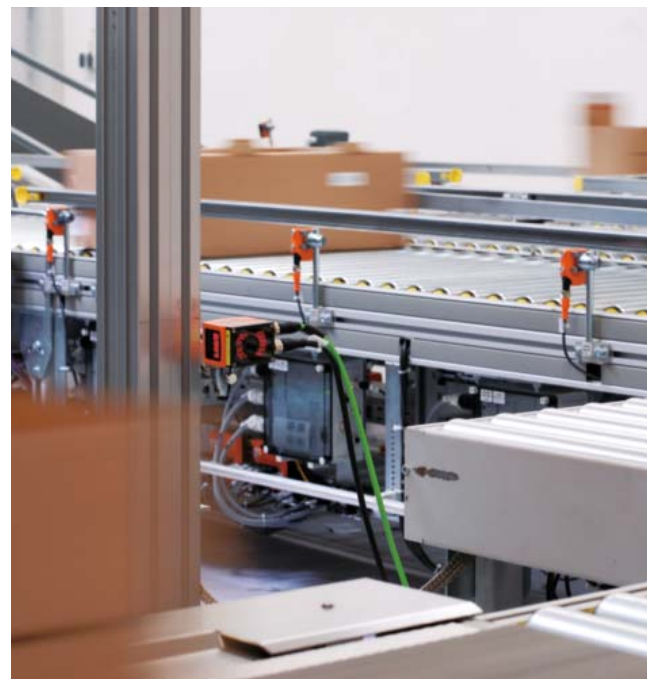
Operation

Repeaters are used for AS-Interface to enable the network cable run to be extended beyond 100 m. Galvanic separation of network segments and independent voltage supplies ensure stability. The 62 participants are provided with a higher total current and the voltage drop decreases.

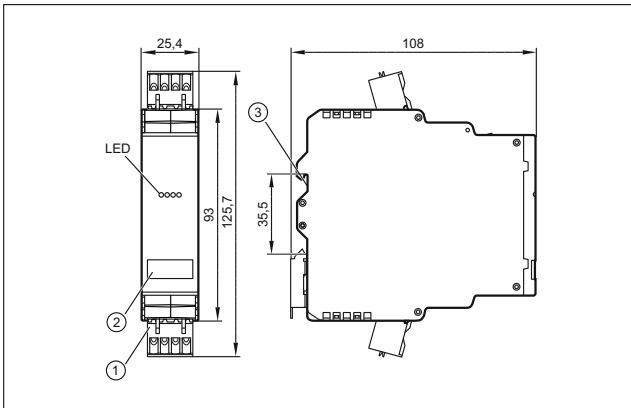
Features of the unit

The improved performance is packed into the new SmartLine housing. While conventional repeaters usually have a temperature range from 0...55 °C, the new unit from ifm operates reliably across a broad range from -25...70 °C.

The improved operating temperature range makes the new unit from ifm a class leader. This results in a longer life time thus saving time and money.



Dimensions



- 1) plug with cage clamp connection
- 2) panel for labelling
- 3) Din rail adapter



Products

Type	Description	Order no.
SmartLine AS-i repeater		
	Protection IP 20, Combicon connectors	AC3225

Technical data

SmartLine AS-i repeater AC3225		
Operating voltage	[V DC]	26.5...31.6
Total current consumption via AS-i	[mA]	2 x 60
Ambient temperature	[°C]	-25...70
Housing material		PA 6.6

Accessories

Type	Description	Order no.
	AS-i power supply 115/230 V AC, output current (AS-i) 2.8 A	AC1256
	AS-i power supply 115/230 V AC, output current (AS-i) 8 A	AC1258