

Modern classic: new TN temperature sensor



Even easier to use and with improved visualisation

- Measuring range of $-50...150\text{ }^{\circ}\text{C}$, response time $T05 / T09 = 1\text{ s} / 3\text{ s}$.
- Clearly indicates the acceptable ranges: programmable red/green display
- Quick and easy handling via 3 pushbuttons with VDMA menu
- Versions with analogue ($4...20\text{ mA} / 0...10\text{ V}$) or switching output (2 x PNP/NPN).
- Visualisation of the switching states by clearly visible LEDs



Quick and resistant

The compact TN type temperature sensors are distinguished by excellent response times, high pressure resistance and adaptive process connections. The sensors easily resist applications with temperatures up to $150\text{ }^{\circ}\text{C}$ and high pressure loads up to 300 bar. The measuring range is freely scalable.

Updating a classic

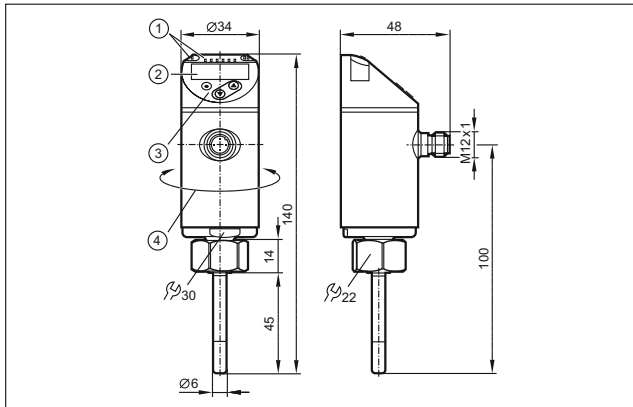
What is new is the quick and easy handling via three pushbuttons. The display can be switched from the indication of "red" to an alternating indication of "red - green".

So, switching states can be highlighted or an independent colour window can be created. The sensor head can be rotated and offers optimum readability from any position. Thanks to captive laser labelling on the stainless steel housing, the units can still be identified after years.



Measuring range [°C]	Factory setting [°C]	Process connection	Pressure resistance [bar]	Response dynamics T05 / T09 [s]	Order no.
Output function 1 x NO / NC programmable · 1 x analogue output 4...20 mA or 0...10 V programmable					
-50...150	-40...150	M18 x 1.5 I	300	1 / 3	TN2511
Output function 2 x NO / NC programmable					
-50...150	-40...150	M18 x 1.5 I	300	1 / 3	TN7511

Dimensions



1) LEDs (display unit / switching status), 2) 4-digit alphanumeric display / alternating indication of red and green, 3) Programming buttons, 4) Upper part of the housing can be rotated by 345°


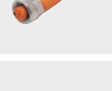


Accessories

Type	Description	Order no.
	Protective cover for fluid sensors with M12 connector, polypropylene homopolymer	E30420
	Mounting clamp Ø 34 mm, PBT	E10017
	Mounting clamp Ø 34 mm, PA	E10193
	Progressive ring T-piece Stainless steel (320S17)	E40102
	Adapter, M18 x 1.5 - L18, high-grade stainless steel (316L/1.4404), FKM	E40104
	Adapter, M18 x 1.5 - G 1/2 High-grade stainless steel (316L/1.4404)	E40096
	Adapter, M18 x 1.5 - G 1/4 High-grade stainless steel (316L/1.4404)	E40099



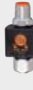

Further technical data

Operating voltage	[V]	18...32 DC
Current rating	[mA]	250
Accuracy	[K]	± 0.3 + (± 0.1 % MS)
Resolution display	[K]	0.1
Electrical design		PNP / NPN
Protection		IP 67
Communication interface		IO-Link

Connection technology

Type	Description	Order no.
	Socket, M12, 2 m black, PUR cable	EVC001
	Socket, M12, 5 m black, PUR cable	EVC002
	Socket, M12, 2 m black, PUR cable	EVC004
	Socket, M12, 5 m black, PUR cable	EVC005

IO-Link accessories

Type	Description	Order no.
	USB IO-Link master for parameter setting and analysis of units Supported communication protocols: IO-Link (4.8, 38.4 and 230 Kbits/s)	E30390
	IO-Link interface for parameter setting and analysis of units with DTM specification, current consumption from USB port: max. 500 mA	E30396
	Memory plug, parameter memory for IO-Link sensors	E30398
	LINERECORDER SENSOR, software for parameter setting and setting up IO-Link sensors	QA0001

ifm article no. 78001710 · We reserve the right to make technical alterations without prior notice. · 11.2015