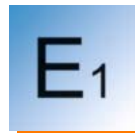


# RFID for mobile machines



## All in one unit: antenna, evaluation and CANopen interface

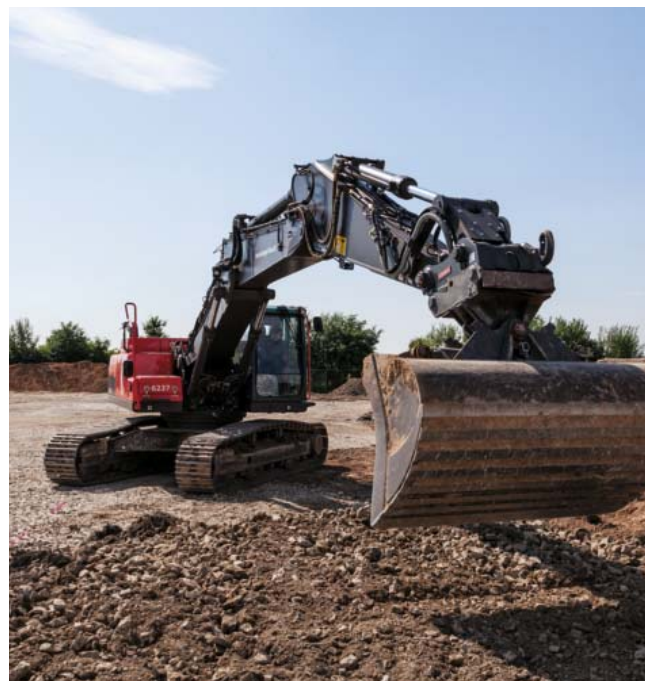
- Optimised for outdoor use with IP 67 and IP 69K
- Extended temperature range of -40...85 °C
- E1 type approval
- Shock resistant to EN60068-2-27 and vibration resistant to EN60068-2-64
- Optimised for use with ifm *ecomatmobile* controllers



### RFID compact units suitable for mobile use

The robust RFID compact units with CANopen interface have been developed for identification tasks in agricultural machines, municipal vehicles and construction machines. It automatically detects different attachments and configures the corresponding settings in the controller. This automatic identification simplifies the creation of user-specific system set-ups.

Information on maintenance intervals and operating times can automatically be generated and stored since the controller automatically detects when and how long a specific machine set-up runs. Downtimes are minimised, productivity is increased.



## When competences complement each other

ifm develops and produces RFID evaluation units and antennas for industrial applications.


These RFID systems are available for all common frequency ranges.

Even the integration of different fieldbuses into the RFID components has been successfully implemented.

Furthermore, ifm as an automation specialist has know-how of many years in the area of mobile machines, where control systems and sensors from ifm have been established in the market.

The competences and experience of these both different areas have now been combined in the RFID solution for mobile machines.

## Connection technology



Type	Description	Order no.
	Socket, M12, 2 m black, PUR cable	<b>EVM036</b>
	Socket, M12, 10 m black, PUR cable	<b>EVM038</b>
	Socket, M12, 5 m black, PUR cable	<b>EVC492</b>
	Jumper, M12, 5 m, black, PUR cable, LED	<b>EVC039</b>
	Jumper, M12, 5 m, black, PUR cable	<b>EVC069</b>


## The products

Description	Order no.
<b>RFID evaluation unit / RFID antenna</b>	
M18 flush, 13.56 MHz, CANopen interface	<b>DTM424</b>
M18 non flush, 13.56 MHz, CANopen interface	<b>DTM425</b>
M30 flush, 13.56 MHz, CANopen interface	<b>DTM434</b>
M30 non flush, 13.56 MHz, CANopen interface	<b>DTM435</b>

Further technical data		
Operating voltage	[V DC]	9...32
Current consumption sensor	[mA]	< 50 at 24 V, < 85 at 12 V
Ambient temperature	[°C]	-40...85
Protection rating, protection class		IP 67 / IP 69K, III
Housing material		stainless steel
Interfaces		1 x CAN
Supported CAN protocols		CANopen
Standards and tests (extract)		CE, radio approval
Connection		M12 connector

## Accessories

Type	Description	Order no.
<b>Display</b>		
	BasicDisplay XL, 4,3", CAN Interface	<b>CR0452</b>
	Process and dialogue unit PDM360 NG, 7" colour display	<b>CR1081</b>

RFID transponders		
	ID tag/30X2.8/03 – 13.56 MHz, 16 Kbits – FRAM	<b>E80370</b>
	ID tag/30X2.5/06 – 13.56 MHz, 896 bits	<b>E80371</b>
	ID tag/R20X2.5/06 – 13.56 MHz, 896 bits	<b>E80377</b>
	ID tag/30X2.8/03 – 13.56 MHz, 64 Kbits	<b>E80380</b>
	ID tag/4.35X3.6/03 – 13.56 MHz, 896 bits, 10 pcs	<b>E80381</b>
	ID tag/label 65X30/03 – 13.56 MHz, 896 bits, 500 pcs	<b>E80382</b>
	ID tag/label 80X50/03 – 13.56 MHz, 896 bits, 500 pcs	<b>E80379</b>