



As simple as a sensor – the new multicode reader O2I

Identification systems



ifm.com/gb/o2i

50th
ifmniversary
experience in automation.

Multicode reader O2I – easy to use, quick and reliable identification of 1D and 2D codes

Powerful:

4 x higher resolution for reliable reading results, 10 x faster evaluation time, 10 x faster set-up.

Simple:

Teaching via one button and configuration via smartphone app.

Well equipped:

Integrated ifm memory stick, polarisation filter, automatic focussing, laser focussing aid and rotatable connector.

Communicative:

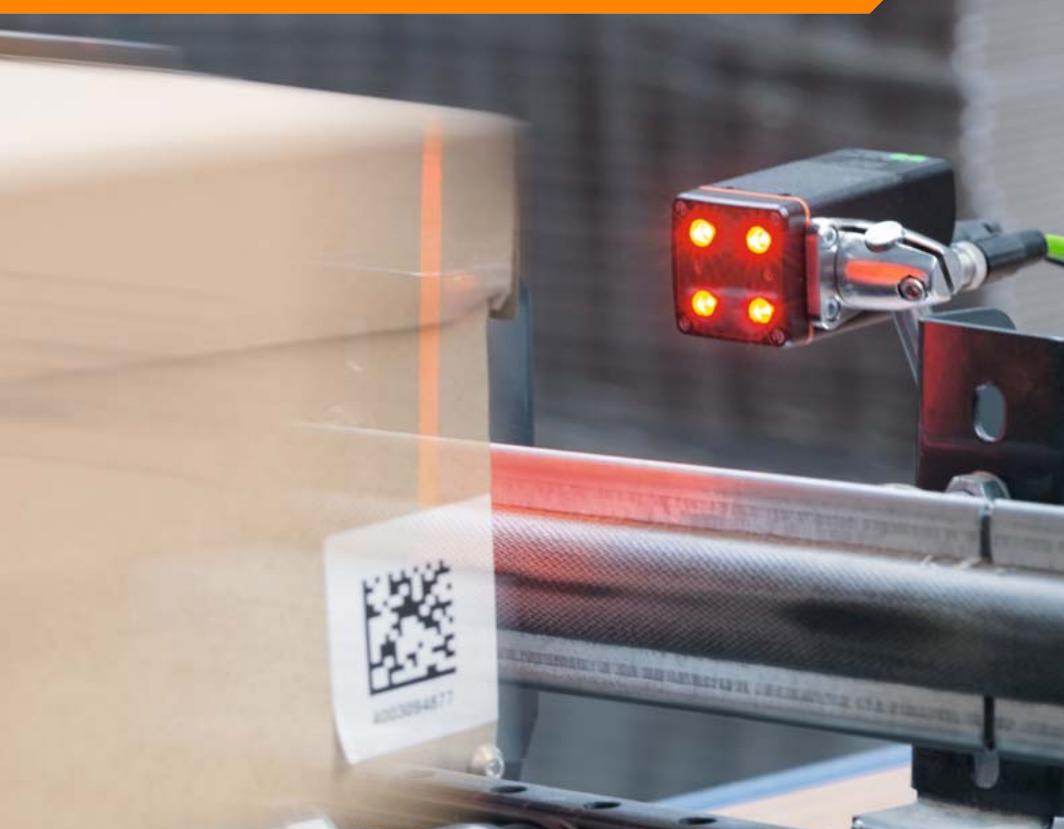
Integrated fieldbus interfaces.

Award winning:

Vision Assistant software to configure complex identification tasks.

Robust:

Industrially compatible diecast housing.



The O2I teach app is used to generate a DataMatrix code on the smartphone display. Just hold it in the field of view of the multicode reader – and the configuration is automatically applied. Available for iOS, Android and Windows.



Easy set-up.

One-button teach

Ready for use within a few seconds

One highlight: simple teaching via one button. The sensor automatically does the focussing, exposure setting and code type recognition and is ready for use in a few seconds. The preset device configuration can be changed by means of a user-friendly smartphone app.



Standard applications – one image, one code

Simple applications with a bar code or 2D code per image can be set quickly via teach button. This saves time and costs.



5288935026374



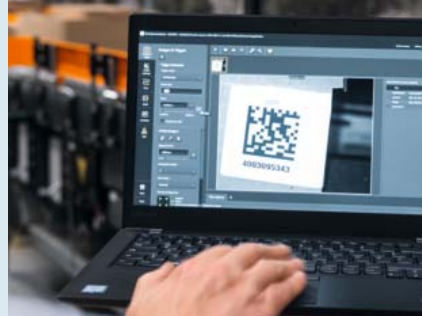
For industrial applications



For complex requirements: the ifm Vision Assistant

Clear configuration of demanding applications

For complex identification tasks, the multicode reader can easily be configured using the award-winning Vision Assistant software. The live image and extensive visualisation of all settings provide an optimum overview.



Optimum contrast by means of a polarisation filter

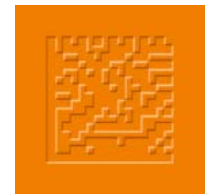
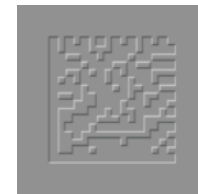
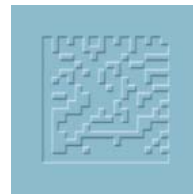
The integrated optional illumination with polarisation filter ensures sufficient contrasts to reliably read codes even in case of shiny surfaces such as metal.



1. Without polarisation filter
2. With polarisation filter

One code, changing background

Several images can be captured very quickly with a different exposure time to recognise codes with variable surface characteristics or deviating colour or ambient light.



Several codes, one image

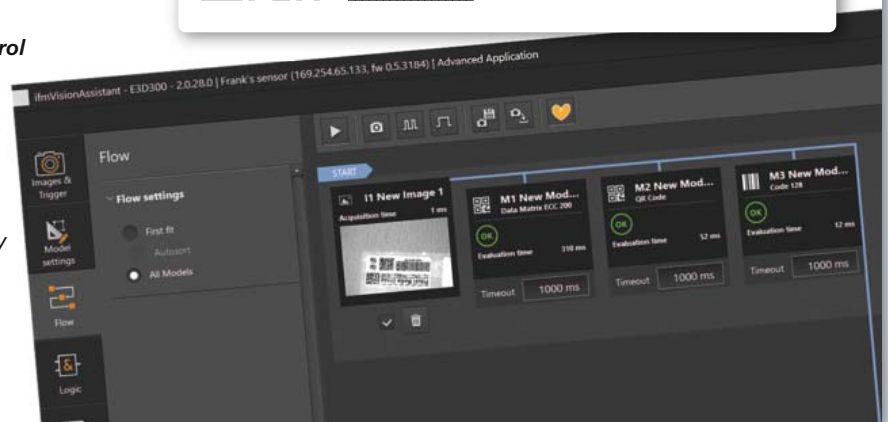
The auto-find code function automatically recognises several different codes in one image. The user can easily assign these codes in the Vision Assistant.



625-779-0541

Unique – the sequential control

Visualises all configurations of the image and code settings. This quickly gives you a comprehensive overview of the whole application. In addition, the logic and interface function allows easy programming of the sensor output.



Worldwide innovation



Multicode reader type	Order no
Standard lens, red light	O21500
Standard lens, infrared light	O21501
Wide-angle lens, red light	O21502

Multicode reader type	Order no
Wide-angle lens, infrared light	O21503
Telephoto lens, red light	O21504
Telephoto lens, infrared light	O21505

Version with Profinet interface in preparation



Go ifmonline!

Inform, select, order
in the ifm webshop

ifm.com



ifm – close to you!



Position sensors



**Sensors for
motion control**



Industrial imaging



Safety technology



Process sensors



**Industrial
communication**



IO-Link



Identification systems



**Condition monitoring
systems**



**Systems for
mobile machines**



**Connection
technology**



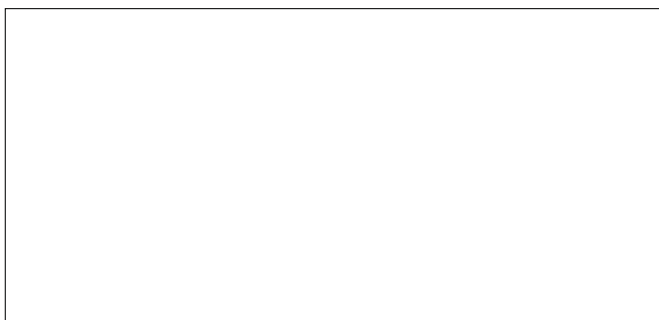
Software



Power supplies



Accessories



ifm electronic gmbh
Friedrichstraße 1
45128 Essen
Tel. +49 / 201 / 24 22-0
Fax +49 / 201 / 24 22-1200
E-mail info@ifm.com

