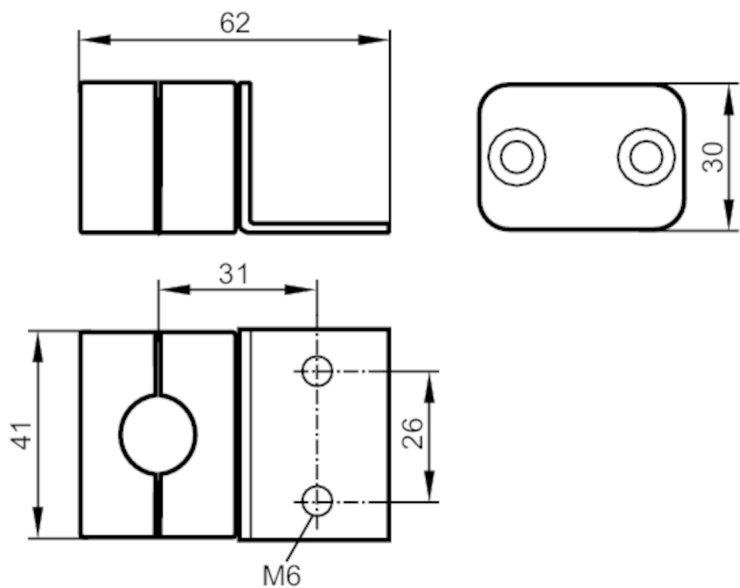


E43016



Mounting clamp for level sensors

MOUNTING SET D16



Application

Design

for capacitive level sensors LK, LI, LT, LL

Mechanical data

Weight

[g]

101.5

Dimensions

[mm]

62 x 41 x 30

Inside diameter

[mm]

16

Material

PP; metal parts: steel galvanized

Tightening torque

[Nm]

2.5

Remarks

Pack quantity

1 pcs.