

Best value performer!

For only
EUR 99.80*



Photocells with excellent performance at low price.

- The new standard for packaging and conveying.
- Extremely long ranges.
- Highest precision with background suppression.
- Easy setting: The new Teach mode.
- Universal mounting with system components and mounting accessories.

IP 67

Easy-to-use

High sensing range

Rotatable connector

All-round photocell

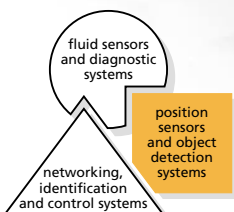
With state-of-the-art technology as well as outstanding performance and an excellent price/performance ratio this range is perfect for universal use. Easy installation is ensured by a clever mounting concept, with special fixtures as well as an adapter plate. The plug can be rotated by 270° so that it can be aligned in any direction.

Versions without setting options, for use in standard applications.

Versions with potentiometer, for simple setting in simple applications.

Versions with teach function.

The innovative teach method means complex programming is no longer required. The unit features one button each for teaching of a precise on and off state for the sensor signal.



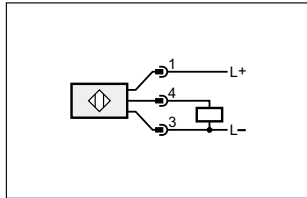
*list price without VAT

**Photoelectric sensors
and systems**

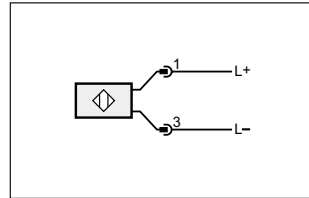
**Applications:
Position detection in packaging and conveying**

Ranges [mm]	Teach button	240° potentiometer	Protection	Current consumption [mA]	Order no.
Diffuse reflection sensor · red light 624 nm · M12 connector · background suppression · wiring diagram no. 1					
50...1400	–	•	IP 67, II	30	O5H200
50...1800	•	–	IP 67, II	25	O5H500
Retro-reflective sensor · red light 624 nm · M12 connector · polarisation filter · wiring diagram no. 1					
100...7000	–	–	IP 67, II	25	O5P200
Through-beam sensor · red light 624 nm · M12 connector · transmitter · wiring diagram no. 2					
0...20000	–	–	IP 67, II	10	O5S200
Through-beam sensor · red light 624 nm · M12 connector · receiver · wiring diagram no. 1					
–	–	–	IP 67, II	25	O5E200

Wiring diagram of the units



Wiring diagram no. 1



Wiring diagram no. 2

System components

Type	Description	Order no.
	Mounting bracket for rod Complete set incl. clamp	E21083
	Protective bracket for rod Complete set incl. clamp	E21084
	Universal angle bracket	E21085
	Mounting brackets mounting on the back of the unit	E21086
	Bracket for free-standing mounting	E21087
	Dovetail clamp	E21088

Common technical data		
Operating voltage	[V]	10...36 DC
Current rating	[mA]	200
Switching frequency	[Hz]	1000
Voltage drop	[V]	< 2.5
Short-circuit protection, pulsed		•
Reverse polarity / overload protection		• / •
Operating temperature	[°C]	-25...60
EMC		DIN EN 60947-5-2
Material:	Housing / plug adapter Front lens / LED window Front frame	PA PMMA stainless steel

Connectors and splitter boxes

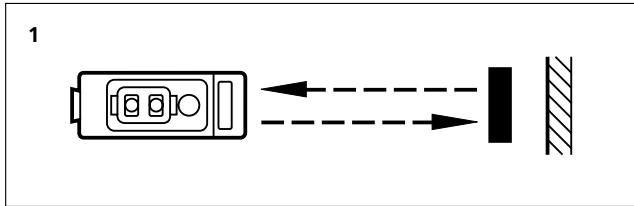
Type	Description	Order no.
	Socket, M12, 2 m black, PUR cable	E10906
	Socket, M12, 5 m black, PUR cable	E10907
	Socket, M12, 2 m black, PUR cable	E10900
	Socket, M12, 5 m black, PUR cable	E10901
	Socket, M12, 2 m orange, PVC cable	E11647
	Socket, M12, 5 m orange, PVC cable	E10662
	Socket, M12, 2 m orange, PVC cable	E11636
	Socket, M12, 5 m orange, PVC cable	E10700

Setting options

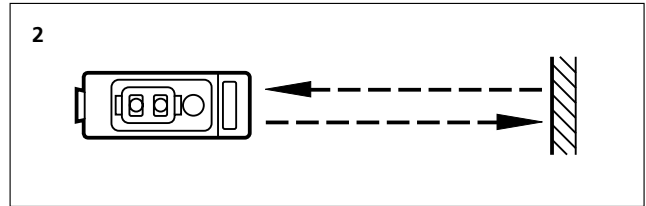


Teach operation

The unit is to switch when the object is detected.

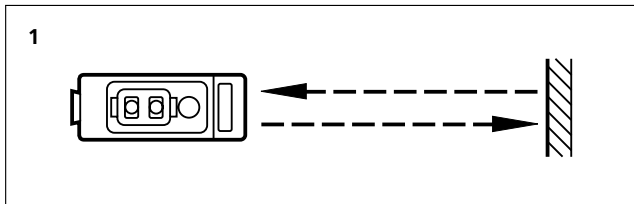


1) Position the object, press the OUTon button.

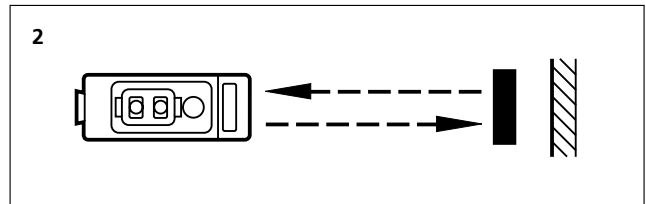


2) Remove the object, press the OUToff button.

The unit is to switch when the object is not detected.

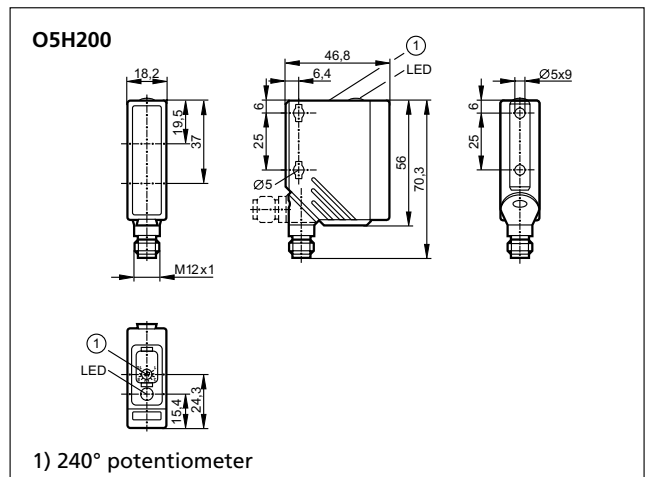
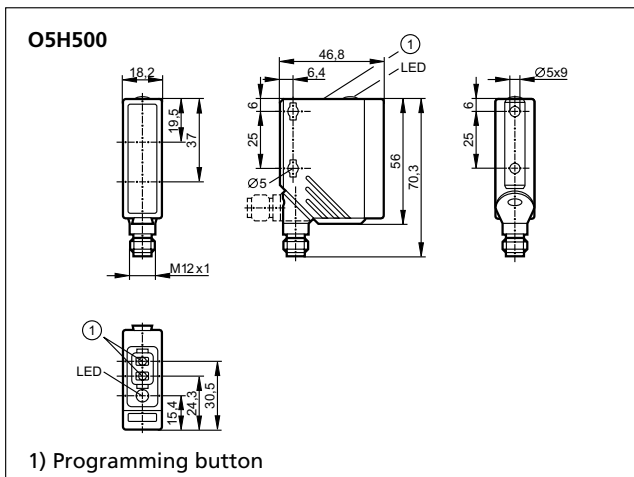


1) Do not position any object, press the OUTon button.



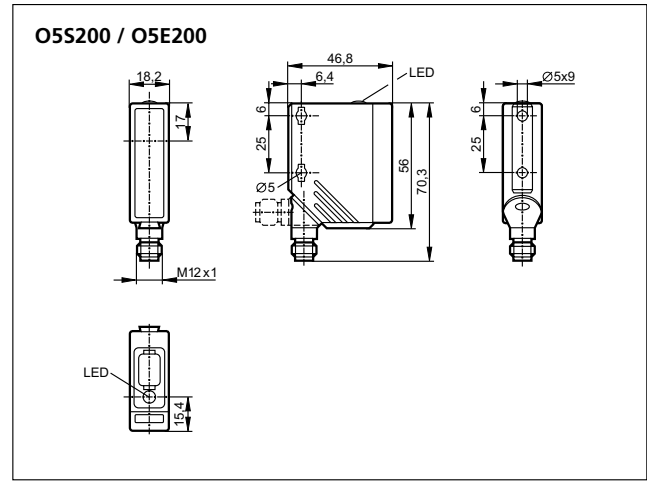
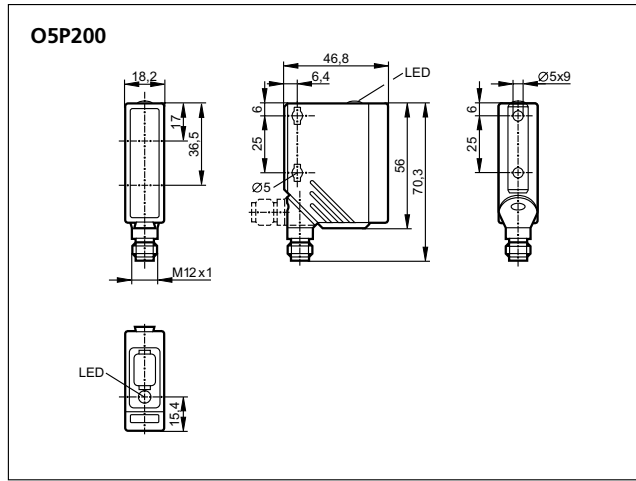
2) Position the object, press the OUToff button.

Dimensions

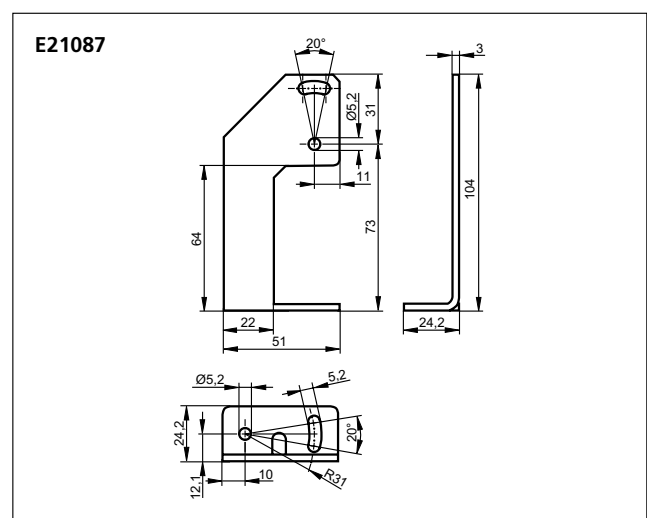
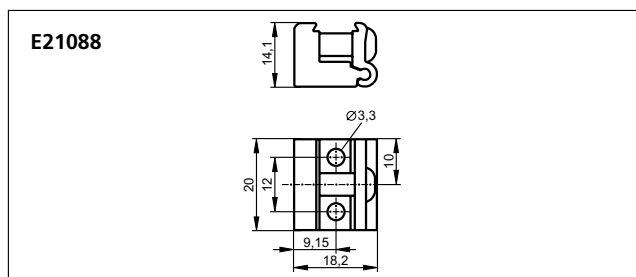
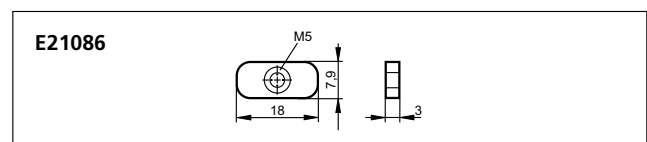
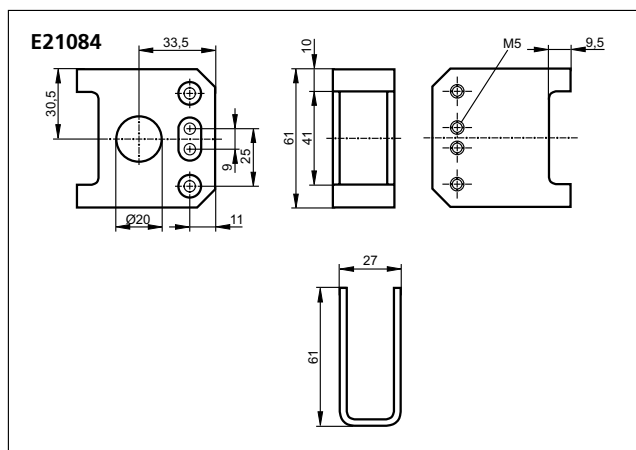
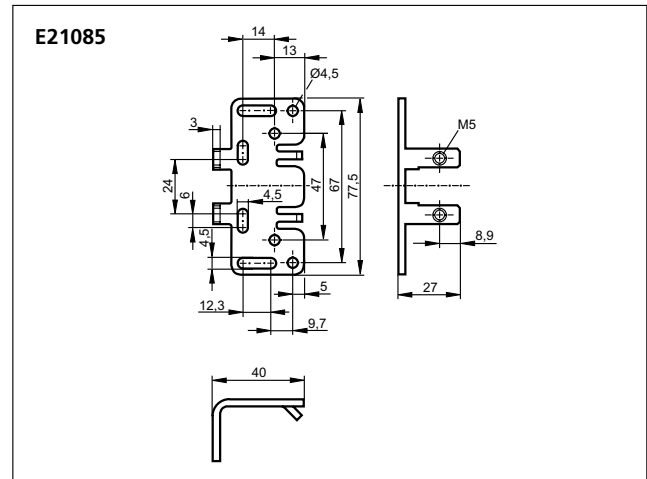
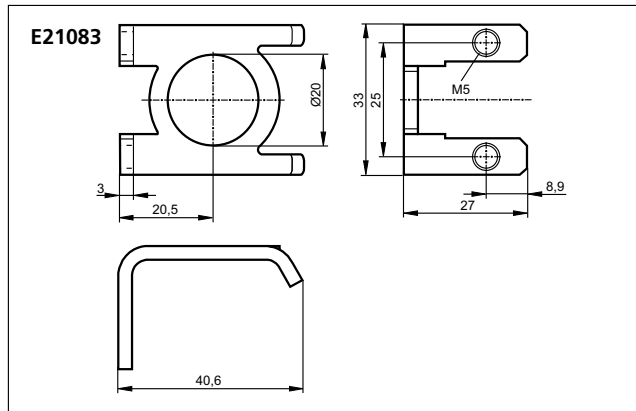


Transmitter in lower lens, receiver in upper lens

Dimensions



Transmitter in lower lens, receiver in upper lens



ifm article no. 7511086 - Printed in Germany on non-chlorine paper. - We reserve the right to make technical alterations without prior notice. - 03.2005