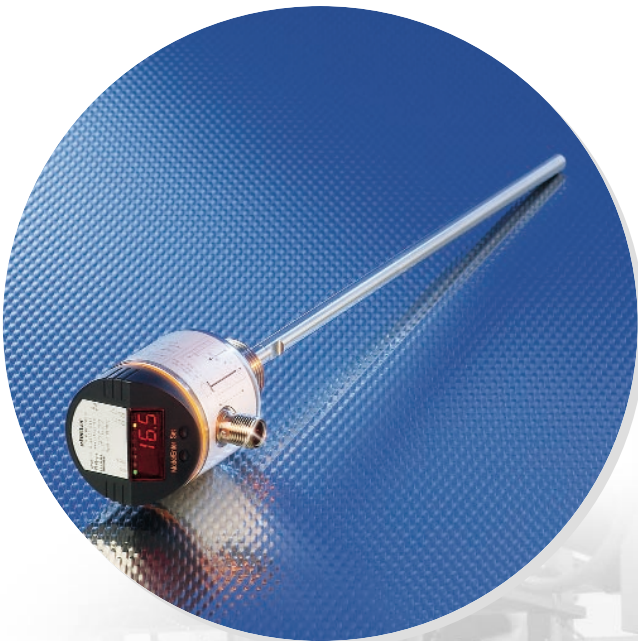


efector[®] *glur* – the microwave sensor. It is all about the echo!



Innovative measuring principle also for compact tanks.

- 2 programmable switching outputs with hysteresis and window function.
- Easy operation via the user menu.
- Direct indication of the current level on the LED display.
- If necessary, the sensor rod can be cut to length by the user.
- Excellent price / performance ratio.



IP 67	M12 connector	Electronic lock	LED display
-------	---------------	-----------------	-------------

Application

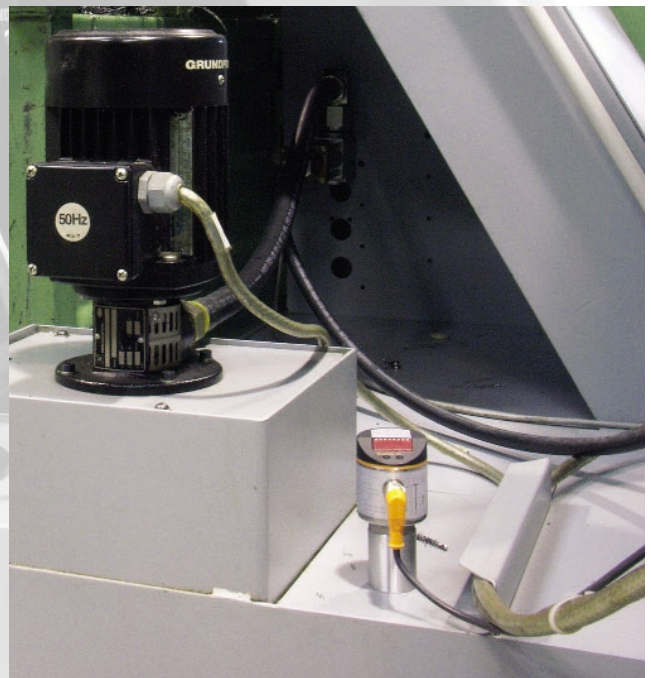
Type LR level sensors operate on the basis of guided wave radar and are suited to continuous level monitoring in water-based media such as coolants and cleaning liquids.

Mounting

The sensor is directly mounted in the tank using a G 3/4 process connection or flange plate. If necessary, the sensor rod can be easily shortened and adapted to the tank by the user.

Setting

Settings of all parameters as well as programming of the switch points and indication of the current level are carried out via a 4-digit alphanumeric display.



fluid sensors and diagnostic systems

position sensors and object recognition

bus, identification and control systems

Level sensors

Rod length 240, 450 and 700 mm
 Electrical design: DC PNP, 4-wire
 M12 connector

Rod length [mm]	Active range [mm]	Inactive range [mm]	Switch-on point SP [mm]	Switch-off point RP [mm]	in steps of [mm]	Order no.
240	190	10 / 40	15...200	10...195	5	LR7022
450	400	10 / 40	15...410	10...405	5	LR7023
700	650	10 / 40	20...660	10...650	10	LR7024

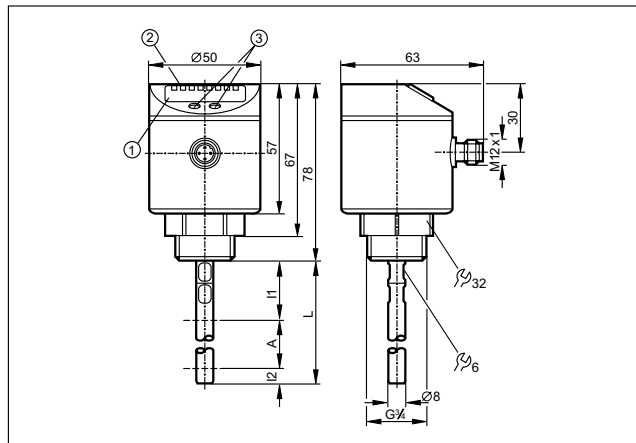
Innovative measuring principle – guided wave radar – for level monitoring in compact tanks.

efector gwr operates to the principle of guided wave radar and measures the level using electromagnetic pulses in the nanosecond range. The pulses are transmitted by the sensor head and guided along the sensor rod. When the microwave pulse hits the medium to be detected it is reflected and guided back to the sensor, where it is evaluated.

The time between transmitting and sending the pulse is a direct measure for the covered distance and therefore the current filling level.

Common technical data		
Operating voltage	[V]	18...30 DC
Current rating	[mA]	200
Current consumption	[mA]	< 80
Power-on delay time	[s]	3
Switch point accuracy	[%]	± 5
Repeatability	[%]	± 2 of the VMR
Dielectric constant medium		> 20
Maximum vessel pressure	[bar]	0.5
Operating temperature	[°C]	0...60
Medium temperature	[°C]	0...80
Protection		IP 67, III
Materials in contact with the medium		stainless steel (303S22), PTFE, NBR
Housing materials		FKM, NBR, PBT, PC, TPE-V, stainless steel (304S15), PTFE, PEI

Dimensions

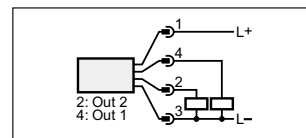


- 1) 4-digit alphanumeric display
- 2) LEDs
- 3) Programming buttons

Accessories

Type	Description	Order no.
	LR mounting clamp	E43200
	Flange plate, LR 73-90	E43201
	Flange plate, LR 65-80	E43202

Wiring diagram



Connectors and splitter boxes

Type	Description	Order no.
	Socket, M12, 2 m black, PUR cable	E10900
	Socket, M12, 5 m black, PUR cable	E10901
	Socket, M12, 2 m black, PUR cable, LED	E10903
	Socket, M12, 5 m black, PUR cable, LED	E10904

ifm article no. 7511128 · Printed in Germany on non-chlorine paper. · We reserve the right to make technical alterations without prior notice. · 03.2006