

Rectangular inductive sensors now also with correction factor 1.



Electromagnetic field immune versions, Teflon coating and correction factor 1.

- Corner LEDs clearly visible in any mounted position.
- Very long sensing ranges up to 40 mm.
- Integrated captive clamp.
- Freely selectable sensing face with 5 positions.
- Reinforced plastic housing with rotatable M12 connector.



Increased sensing range

K=1 same sensing range for all metals



Applications

The new inductive rectangular type IMC (40 x 40 mm) is specially suited for use in conveying. Now, there are also electromagnetic field immune and Teflon-coated units for welding applications.

Correction factor 1

The new versions of the IMC design have the same sensing range on all metals, i.e. the correction factor is constantly "one" (K=1).

Installation

By loosening the adjusting screw, the sensing face can be rotated to 5 different positions and thus be optimally adapted to your applications. The two clearly visible corner LEDs can be seen even under adverse installation conditions.



fluid sensors and diagnostic systems

position sensors and object detection

bus, identification and control systems

Applications:
Conveying, machine tools and factory automation

Design / Type [mm]	Sensing range [mm]	Material	U _b [V]	Protection rating	f [Hz]	I _{load} [mA]	U _{drop} [V]	I _o [mA]	Order no.
--------------------	--------------------	----------	--------------------	-------------------	--------	------------------------	-----------------------	---------------------	-----------

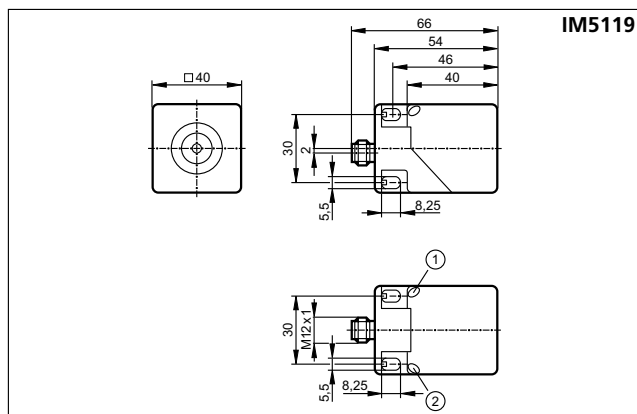
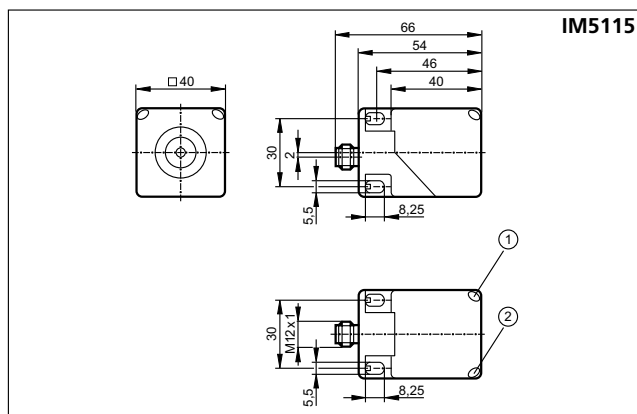
M12 connector / output function NO / 3-wire DC PNP

40 x 40 rectangular	20 f	PA	10...36	IP 67	100	100	< 2.5	< 25	IM5115
40 x 40 rectangular	35 nf	PA	10...36	IP 67	100	100	< 2.5	< 25	IM5116
40 x 40 rectangular	40 nf	PA	10...36	IP 67	100	100	< 2.5	< 25	IM5117

M12 connector / output function NO / 3-wire DC PNP / K=1 / electromagnetic field immune

40 x 40 rectangular	20 f	PA, Teflon	10...36	IP 67	200	200	< 2.5	< 20	IM5119
40 x 40 rectangular	35 nf	PA, Teflon	10...36	IP 67	200	200	< 2.5	< 20	IM5120

Dimensions



- 1) LED yellow (switching status)
- 2) LED green (operating status)

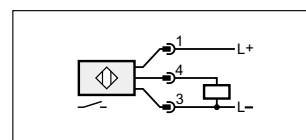
Connectors and splitter boxes

Type	Description	Order no.
	M12 socket, 2 m black, PUR cable	E10906
	M12 socket, 5 m black, PUR cable	E10907
	M12 socket, 2 m black, PUR cable	E10900
	M12 socket, 5 m black, PUR cable	E10901

Common technical data

Type IMC	
Operating temperature [°C]	-25...70
Short-circuit protection	•
Rev. polarity / overload protection	• / •
Function display	
Switching status	yellow
Operating status	green
Housing length [mm]	54
Approvals	CE, cULus

Wiring diagram



Accessories

Type	Description	Order no.
	Mounting set, angled for clamp mounting, high-grade stainless steel	E11119
	Mounting set, straight for clamp mounting, high-grade stainless steel	E11120
	Shaft straight, diameter 14 mm high-grade stainless steel	E20939
	Cube for mounting on an aluminium profile, diecast zinc	E20952

ifm article no. 7511128 · Printed in Germany on non-chlorine paper. · We reserve the right to make technical alterations without prior notice. · 03.2006