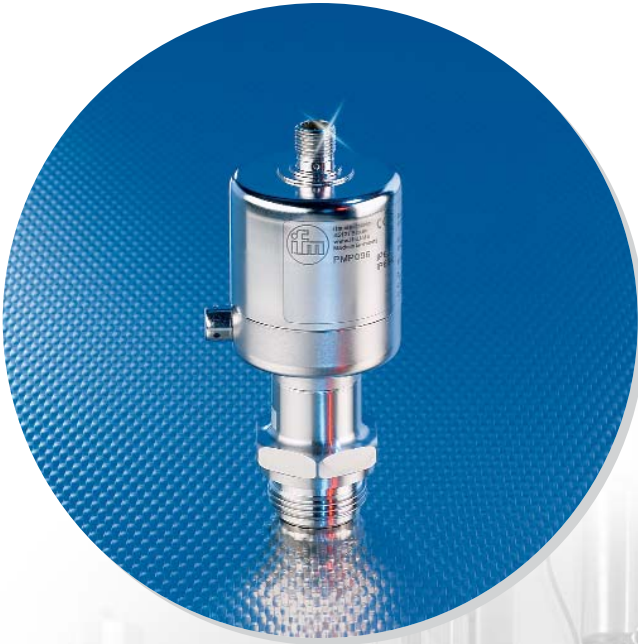


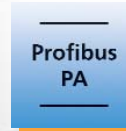
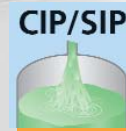


Hygienic pressure transmitter with Profibus PA interface.



Online monitoring and diagnosis of electronics and measuring cell.

- Optimum accuracy (0.2 %) due to electronic temperature compensation.
- Overload-resistant and drift-free ceramic measuring cell with highest purity (99.9 %).
- O-ring free sealing concept for maintenance-free operation.
- Flush process connection for integration in aseptic processes.
- EHEDG certified modular adapter system for CIP and SIP applications.



Tried-and-tested pressure measurement technology, now also with Profibus PA

The tried-and-tested pressure measurement technology of the series PM is now also used for PMP type units that communicate via the established bus system Profibus PA.

The units support the Profibus PA profile 3.01 "pressure transmitter" including the extension for "installation and maintenance".

In addition to the features high accuracy of 0.2 %, improved temperature decoupling, electronic temperature compensation, hygienic design as well as CIP and SIP capability, the unit provides an extended diagnostic capability via Profibus PA.

To ensure this, the unit carries out self-tests while in operation. The diagnostic status can be polled cyclically or acyclically via the Profibus master.

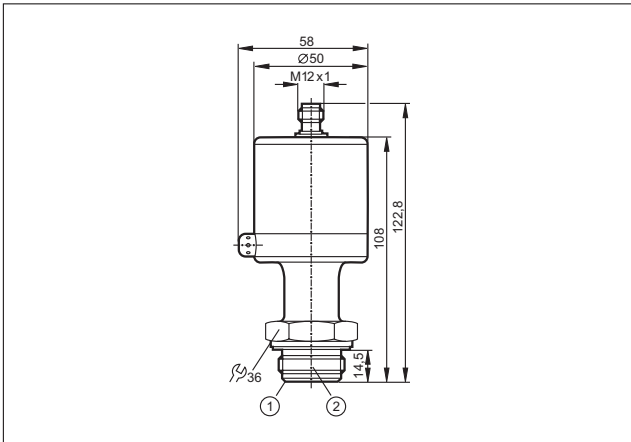


fluid sensors
and diagnostic
systems

position
sensors
and object
recognition

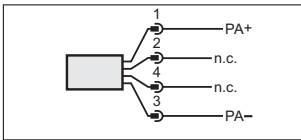
bus,
identification
and control systems

Dimensions








- 1) Aseptoflex sealing edge
- 2) Aseptoflex thread

Wiring diagram



Accessories

Type	Description	Order no.
	Aseptoflex adapter* clamp 1" -1.5" (DN25-40)	E33001
	Aseptoflex adapter* clamp 2" (DN50)	E33002
	Aseptoflex adapter* Varivent D 50 (DN25 / 1")	E33021
	Aseptoflex adapter* Varivent D 68 (DN40-125 / 1.5" -6")	E33022
	Welding adapter Ø 50 mm, high-grade stainless steel (316S12), O-ring: FPM	E30052
	* further Aseptoflex adapters available	

Measuring range Relative pressure [bar]	P _{overload} max. [bar]	P _{bursting} min. [bar]	Order no.
Process connection: ASEPTOFLEX adapter thread			
-1...10	50	150	PMP094
-1...4	30	100	PMP095
-0.124...2.5	20	50	PMP096
-0.05...1	10	30	PMP097

Common technical data

Type of pressure: relative pressure Liquids and gases Profibus PA, electrically separated		
Operating voltage	[V DC]	9...32
Reverse polarity protection		•
Overload protection		•
Integrated watchdog		•
Current consumption	[mA]	< 15.6
Programming options		parameter setting to Profibus PA profile pressure transmitter, version 3.01, I&M parameters, zero offset, damping

Accuracy / deviation

(in % of the span) turn down 1:1

Deviation of the characteristics	< ± 0.2
Linearity	< ± 0.15
Hysteresis	< ± 0.15
Repeatability	< ± 0.1
Long-term stability	< ± 0.1

**Temperature coefficients (TEMPCO)
in the temperature range 0 ... 70 °C
(in % of the span per 10 K)**

Greatest TEMPCO of zero	0.05
Greatest TEMPCO of the span	0.15

Power-on delay time	[s]	35
Measuring cycle time	[ms]	< 70
Medium temperature	[°C]	-25...125 (145 max. 1 h)
Protection rating		IP 67 / IP 69 K
Housing materials		stainless steel (316S12); PTFE ULTEM; Viton
Materials (wetted parts)		stainless steel (316S12); ceramics (99.9 % Al ₂ O ₃); PTFE

ifm article no. 7511246 · Printed in Germany on non-chlorine paper. · We reserve the right to make technical alterations without prior notice. · 11.2007