



Safe measurement of the smallest quantities at low cost.



Inline measurement for small dosing quantities.

- Suitable for water and aqueous solutions up to 200 ml/min.
- With flow rate, totalising and temperature indication.
- Fast response time and high response sensitivity.
- 4-digit alphanumeric LED display for representation of the measured data.
- Process connection G 1/8.

High-grade stainless steel pipe length

Outputs: analogue binary pulse

Electronic lock

IP 65

Measurement technique

The volumetric flow sensor SQ operates according to the calorimetric measuring principle. Two measuring elements as well as a heat source are located on the measuring pipe. The physical effect that a flowing medium absorbs heat energy and conducts it away is used. The resulting temperature change is an indication of flow.

Device function

This volumetric flow sensor has been designed for the dosing of water and aqueous solutions and offers a wide range of applications. The measuring pipe itself is inside the unit, offering high protection against mechanical strain and measurement influences. Analogue, binary and pulse outputs offer various possibilities to process the measured data.



Sensor for the measurement of smallest dosing quantities.

fluid sensors and diagnostic systems

position sensors and object recognition

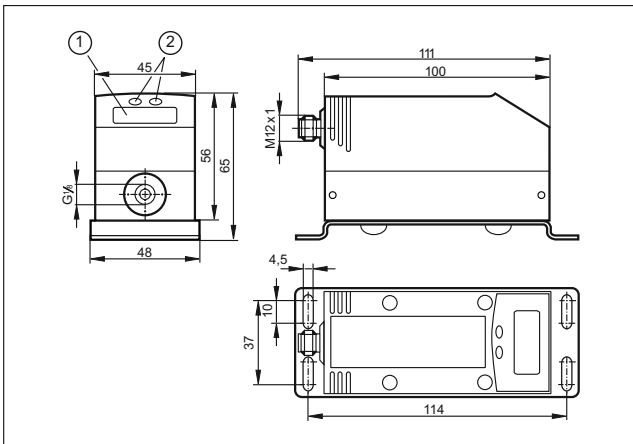
bus, identification and control systems

Application:
Water and aqueous solutions

Measuring range Flow [ml/min]	Pulse value [ml]	Response time Flow [s]	Accuracy Flow	Process connection	Order no.
M12 connectors, gold-plated contacts · electrical design DC PNP					
1...200	0.1...2 000 000 000	< 0.3 (dAP = 0)* / 2.5 (dAP = 0)**	≤ 100 ml/min: ± (5 % MV + 0.8 % VMR) / > 100 ml/min: ± 15% MV	G 1/8	SQ0500

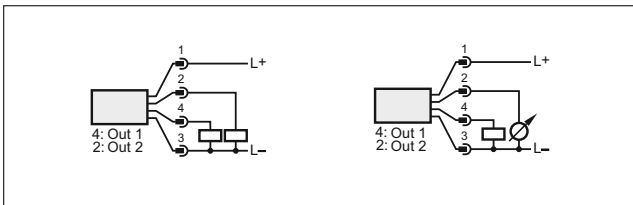
* for flow increase, ** for flow decrease

Dimensions



- 1) 4-digit alphanumeric display
- 2) programming button




Wiring diagram



Further technical data

Type SQ0500		
Operating voltage	[V]	19...30 DC
Current consumption	[mA]	< 110
Short-circuit protection, pulsed		•
Reverse polarity / overload protection		• / •
Current rating	[mA]	2 x 250
Measuring range temperature	[°C]	0...60
Pressure resistance	[bar]	10
Housing materials		high-grade stainless steel (316S12), PC (APEC), Makrolon, PBT-GF 20, Viton
Sensor material		high-grade stainless steel (316S12)

Connectors and splitter boxes

Type	Description	Order no.
	M12 socket, 2 m black, PUR cable	EVC004
	M12 socket, 5 m black, PUR cable	EVC005
	M12 socket, 10 m black, PUR cable	EVC006