



Position sensors and object recognition

Rectangular inductive sensors for easy mounting.



Sensors for use in conveying.

- ▲ ■ Corner LEDs clearly visible in any mounted position.
- Very long sensing ranges up to 40 mm.
- Integrated clamp.
- Freely selectable sensing face with 5 positions.
- Versions in 3-wire and 4-wire technology.



Increased sensing range

K=1 same sensing range for all metals

IP 67

Applications

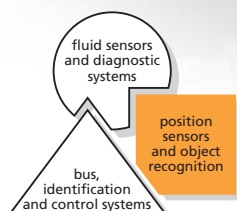
The new inductive rectangular type IMC (40 x 40 mm) is specially suited for use in conveying. Now, there are also electromagnetic field immune and Teflon-coated units for welding applications.

Versions

The various versions of the IMC design are available in 3-wire or 4-wire technology, with correction factor 1 or specially for welding areas.

Installation

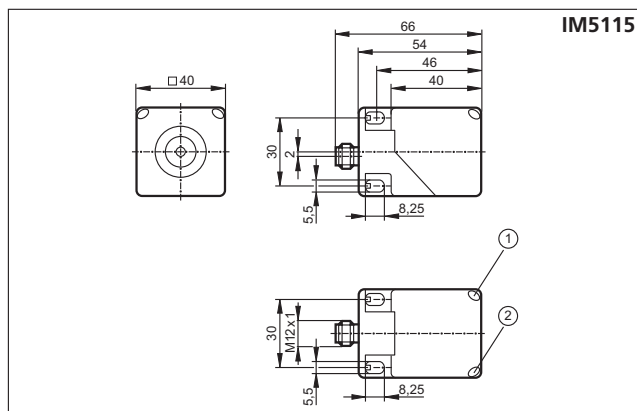
By loosening the adjusting screw, the sensing face can be rotated to 5 different positions and thus be optimally adapted to your applications. The two clearly visible corner LEDs allow the switching status and operating status to be seen even under adverse installation conditions.



Applications:
Conveying, machine tools and
factory automation





Design / Type [mm]	Sensing range [mm]	Material	Protection rating	f [Hz]	I _{load} [mA]	LEDs	I _o [mA]	Order no.
M12 connector / output function NO / 3-wire DC PNP								
40 x 40 rectangular	20 f	PA	IP 67	100	200	front	< 25	IM5115
40 x 40 rectangular	35 nf	PA	IP 67	100	200	front	< 25	IM5116
40 x 40 rectangular	40 nf	PA	IP 67	100	200	front	< 25	IM5117
M12 connector / output function NO / 3-wire DC PNP / K = 1 / electromagnetic field immune								
40 x 40 rectangular	20 f	PA, Teflon	IP 67	200	200	rear	< 20	IM5119
40 x 40 rectangular	35 nf	PA, Teflon	IP 67	200	200	rear	< 20	IM5120
M12 connector / output function NO / 4-wire DC PNP / K = 1 / electromagnetic field immune								
40 x 40 rectangular	20 f	PA, Teflon	IP 67	200	200	rear	< 20	IM5124
40 x 40 rectangular	35 nf	PA, Teflon	IP 67	200	200	rear	< 20	IM5125
40 x 40 rectangular	40 nf	PA, Teflon	IP 67	200	200	rear	< 20	IM5126
40 x 40 rectangular	20 f	PA	IP 67	200	200	front	< 20	IM5132
40 x 40 rectangular	35 nf	PA	IP 67	200	200	front	< 20	IM5133
40 x 40 rectangular	40 nf	PA	IP 67	200	200	front	< 20	IM5135

Dimensions



- 1) LED yellow (switching status)
- 2) LED green (operating status)

Connectors and splitter boxes

Type	Description	Order no.
	M12 socket, 2 m black, PUR cable	EVC001
	M12 socket, 5 m black, PUR cable	EVC002
	M12 socket, 2 m black, PUR cable	EVC004
	M12 socket, 5 m black, PUR cable	EVC005



Common technical data

Type IMC	
Operating voltage [V]	10...36 DC
Operating temperature [°C]	-25...70
Short-circuit protection	•
Rev. polarity / overload protection	• / •
Voltage drop [V]	< 2.5
Function display	
Switching status	yellow
Operating status	green
Housing length [mm]	54
Approvals	CE, cULus

Wiring diagram



Accessories

Type	Description	Order no.
	Mounting set, angled for clamp mounting, high-grade stainless steel	E11119
	Mounting set, straight for clamp mounting, high-grade stainless steel	E11120

ifm article no. 7511153 · Printed in Germany on non-chlorine paper. · We reserve the right to make technical alterations without prior notice. · 10.2006