



Position sensors and object recognition

Automation package for rising stem valves.



Position feedback for single-seat and double-seat valves.

- Sensor, adapter and actuating element: all in one set.
- Reliable fixing even in case of strong vibration in the plant.
- 80 mm stroke monitoring with 3 programmable switching outputs.
- Switch point programming via teach pushbuttons and LED feedback.





TEACH-IN
for simple operation.



Vibration and shock resistant



M12 connector



Electronic lock

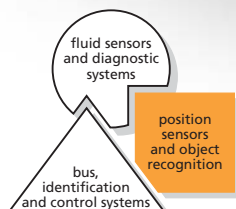
Installation

This set contains all that is required for automating a rising stem valve. The items supplied cover the rising stem valve sensor, adapter and the actuating element of stainless steel.

Quick installation of the adapter and easy switch point teaching by pressing a pushbutton on the sensor reduce the set-up time.

Resistant to vibration

As a result of the optimum distribution of force at the interface from the sensor to the adapter and the adapter-actuator transition this system is insensitive to mechanical stress such as vibration.





Programming via pushbutton
 Measuring distance 80 mm
 Protection rating IP 65 / IP 67

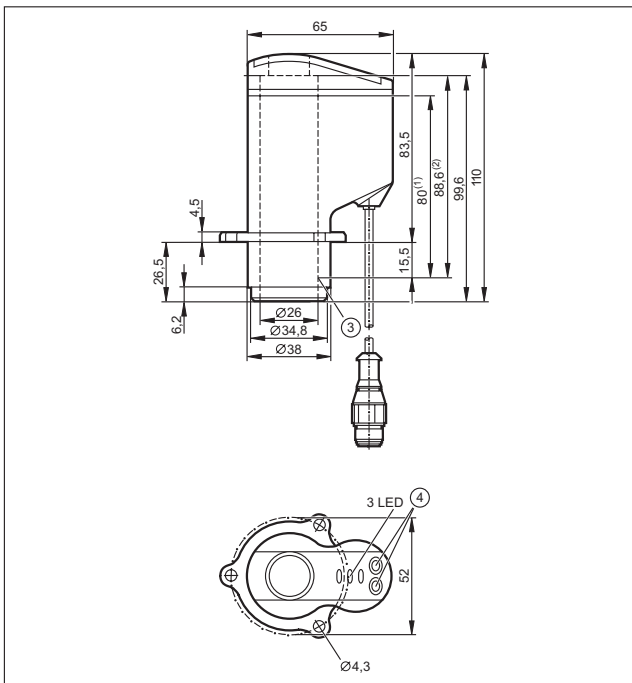
Resolution 0.2 mm
 Absolute linear measurement
 M12 connector

Measuring distance [mm]	Resolution [mm]	Materials	U _b [V]	Protection rating / class	I _{load} [mA]	U _{drop} [V]	I _o [mA]	Order no.
-------------------------	-----------------	-----------	--------------------	---------------------------	------------------------	-----------------------	---------------------	-----------

Connection cable 0.3 m pigtail / output function 3 switching outputs, programmable, PNP

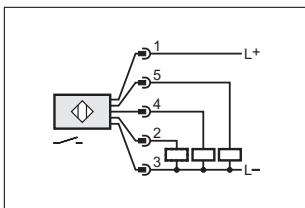
80	0.2	PA, PP, TPE, LCP	18...36	IP 65, IP 67 / III	100	< 2.5	42	ZZ0214
----	-----	------------------	---------	--------------------	-----	-------	----	--------

Dimensions




- 1) Measuring range
- 2) Max. spindle stroke
- 3) Initial value of the measuring range (zero point)
- 4) Programming buttons

Wiring diagram




Connectors and splitter boxes

Type	Description	Order no.
	M12 socket, 5 m orange, PVC cable	E10954
	M12 socket, 10 m orange, PVC cable	E10955

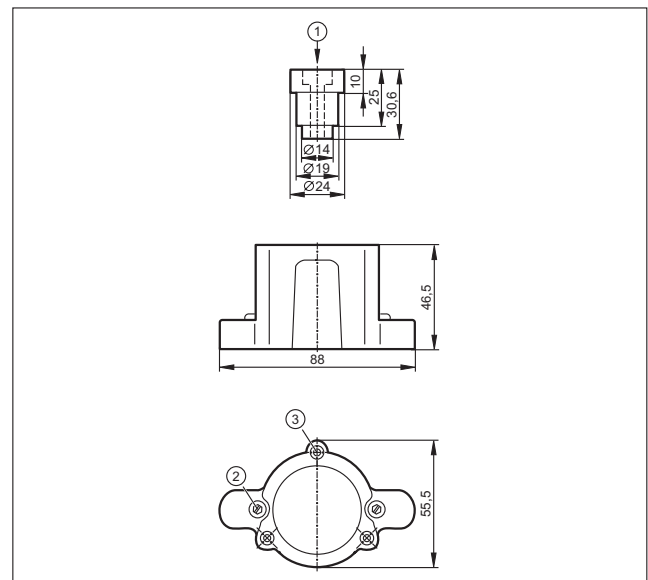
Further technical data

Max. target speed	[m/s]	1
Short-circuit protection		•
Reverse polarity / overload protection		• / •
Programmable functions		3 freely switching thresholds in the measuring range
LED display switching output		open: green seat: yellow close: red
Operating temperature	[C°]	-25...85
Repeatability	[%]	± 0.5 referred to the final value of the measuring range

Accessories (without valve sensor)

Type	Description	Order no.
	Alfa Laval adapter	E11900

Dimensions



- 1) Hexagon socket screw to fix the target on the valve piston
- 2) M4 screw to fix the adapter on the valve
- 3) Threaded M4 hole to fix the valve sensor on the adapter

ifm article no. 7511246 - Printed in Germany on non-chlorine paper. - We reserve the right to make technical alterations without prior notice. - 11.2007